

DERIVING COMMUNITY BENEFITS FROM CLIMATE INVESTMENTS

Gathering Inspiration from California Place-Based Programs

December 7, 2023

Webinar Slides

This file includes presentation slides from the following webinar speakers:

- Louise Bedsworth, Executive Director, Center for Law, Energy, & the Environment (slides 2-11)
- Kate Gordon, Visiting Scholar, UC Berkeley Haas School of Business and Former Senior Advisor to the U.S. Secretary of Energy (slides 12-27)
- Karen Gaffney, Director of Strategic Planning and Communications, North Coast Resource Partnership (NCRP) (slides 28-40)
- Dr. Wilma Franco, Executive Director, Southeast Los Angeles (SELA) Collaborative (slides 41-56)

DERIVING COMMUNITY BENEFITS FROM CLIMATE INVESTMENTS:

Gathering Inspiration from
California Place-Based Programs

December 7, 2023

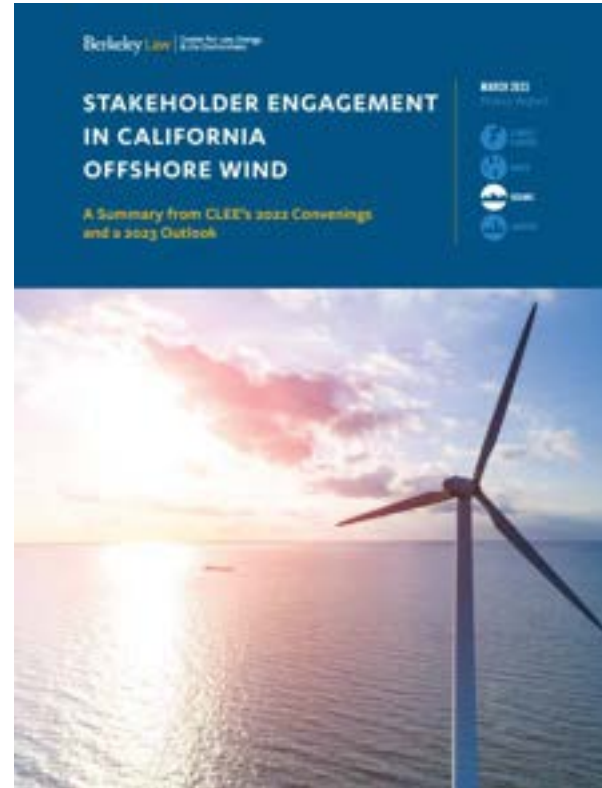
Louise Bedsworth, Executive Director, Center for Law, Energy, & the Environment

Welcome and Logistics

- Recording and notetaking
- Questions in Q&A
- Resources in Chat

CLEE's Work on Community Benefits Agreements in Offshore Wind Development

- May 2023 Convening: Introduction to CBAs
- June 2023: Policy Brief: *Offshore Wind Community Benefits Agreements in California*
- September 2023 Convening: CBA Examples
- December 2023 Convening: Lessons from Place-Based Investments
- 2024: Continued Discussion of Design and Implementation Considerations



Why Consider CBAs and Place-Based Strategies?

Community Benefits Agreements

- Legally binding, enforceable contracts signed by project developers and relevant community groups
- Opportunity for specific benefits for communities
- Typically, CBAs are a tool to gather community support for a project by tying the project to the delivery of specified community benefits

Place-Based Strategies

- Tailor approaches to local contexts and conditions
- Prioritize most impacted communities
- Can include infrastructure investment and capacity building activities

State Investment Programs

Community-Led Effort

Transformative Climate Communities

- Integrated infrastructure investment at a neighborhood scale
- Focus in most impacted communities
- Shared community vision and goals
- Collaborative stakeholder structure
- Three transformative elements:
 - Anti-displacement
 - Workforce and economic development
 - Climate adaptation and resilience
- Comprehensive evaluation framework

Regional Climate Collaboratives

- Strengthen local coordination and leadership
- Build local knowledge, skills, and expertise to increase access to funding
- Collaboratives have a shared vision and partnership agreement
- Collaborative plans to build capacity
 - Actionable
 - Social infrastructure
 - Equity-centered
 - Community-centered
- Locally-informed outcome measures

Community Economic Resilience Fund

- Build regional economic resilience to support transition to low-C economy
- Planning grants in 13 state-identified regions
- Regions develop *Economic Development Strategy* informed by local context and existing plans
- Implementation funding for projects consistent with the *Strategy*
- Evaluation considers: inclusion, job quality and access, climate responsiveness, and community resilience

Alliance of Regional Collaboratives for Climate Adaptation

- Network of collaboratives advancing resilience activities at a regional scale
- Locally-formed and led
- Structures, membership, and governance vary by region
- Shared Guiding Principles:
 - Equity, health, and safety for all Californians
 - Focus on regional level
 - Empower collaboration across sectors and levels of government
 - Prioritize forward-looking projects

Centering Community Vision

- Building programs and policies that fit a specific context
- Account for local priorities and constraints
- Take advantage of local vision, strengths, and resources
- Tangibly advance equitable practices and outcomes



Collaborative Structures

- Meaningful engagement and partnership with communities
 - Inform
 - Inquire
 - Empower
- Meaningful partnership
 - Engagement
 - Reciprocal
 - Accountability and transparency



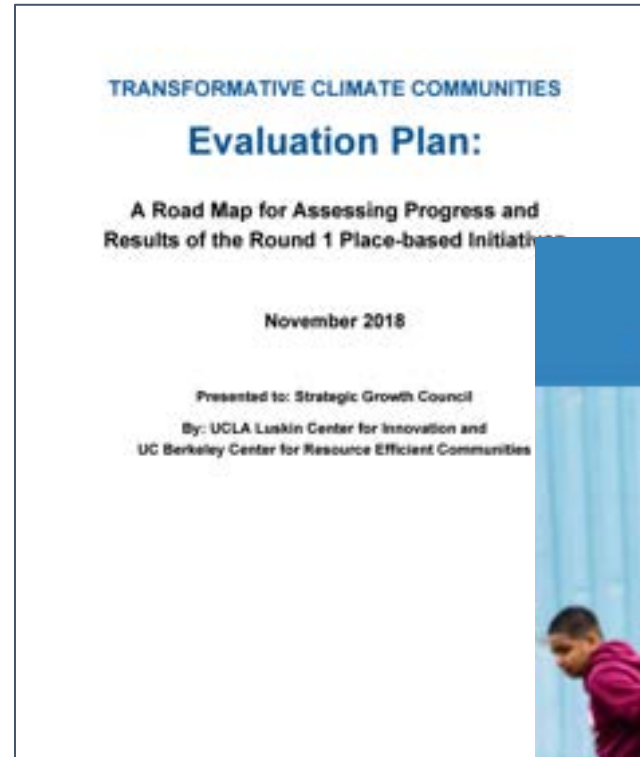
Employ Integrated Approaches to Achieve Multiple Benefits

- Address multiple goals
 - Leverage investments to address multiple priorities
 - Connect solutions to maximize effectiveness
- Work across built, natural, and social systems
 - Link infrastructure, operations, and programs
 - Achieve environmental, economic, and societal benefits



Measuring Outcomes

- Tailored approaches
- Link outcomes to local priorities and values
- Qualitative and quantitative measures



Today's Discussion

- Kate Gordon, Visiting Scholar at the Haas School of Business and Former Senior Advisor to Secretary of Energy
- Karen Gaffney, Director of Strategic Planning and Communications, North Coast Resource Partnership
- Wilma Franco, Executive Director, Southeast Los Angeles (SELA) Collaborative
- Ann Rogan, CEO, Edge Collaborative

Federal Support for Places & People: Tying Funding to Community & Worker Benefits

CLEE Webinar: Deriving Community Benefits from Climate Investments - Dec. 7, 2023

Kate Gordon, Visiting Scholar, UC Berkeley – Haas School of Business





*Images from Google search for
“Clean Energy Future”*

Our imagined
“Clean Energy
Economy”

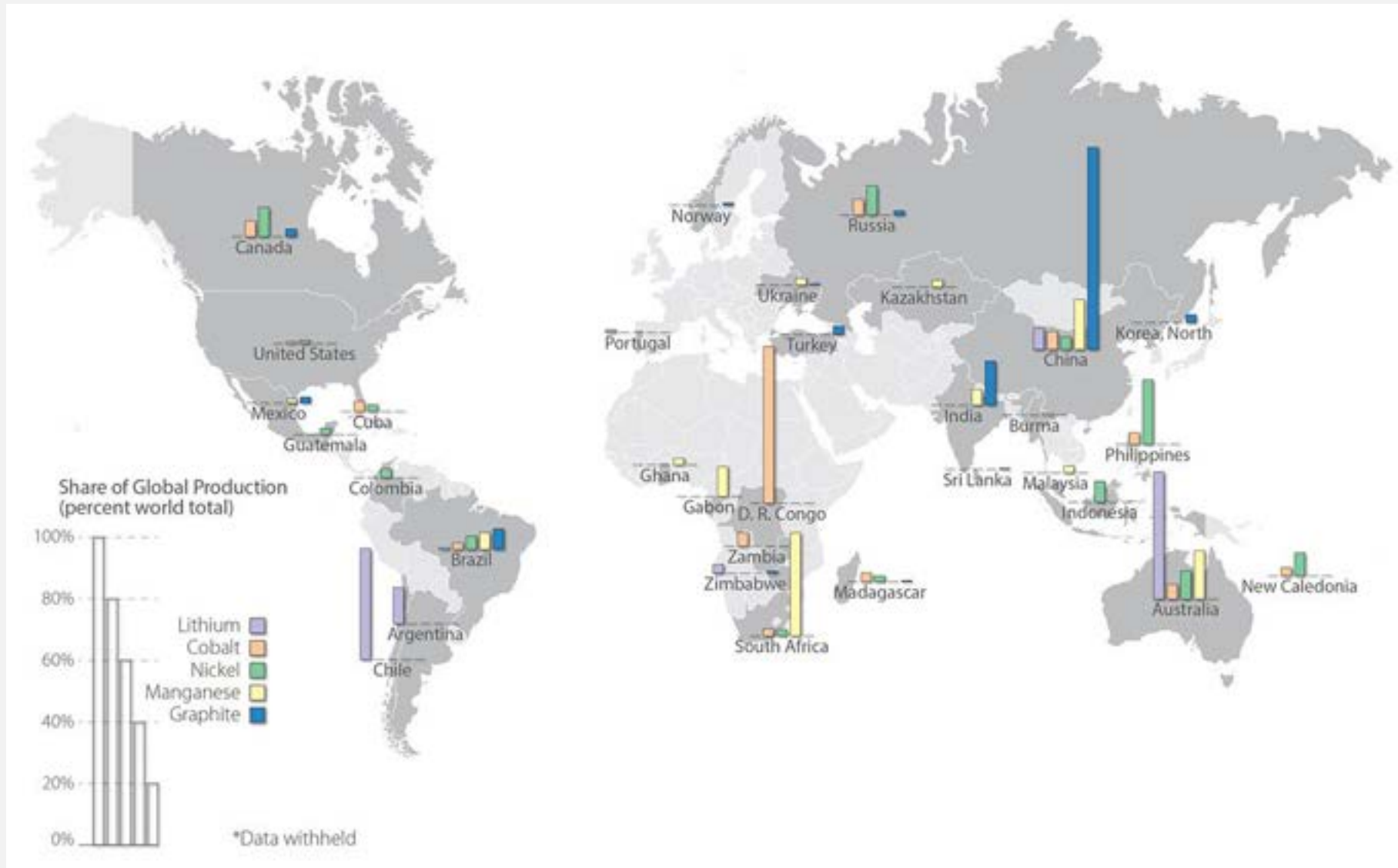


The reality...

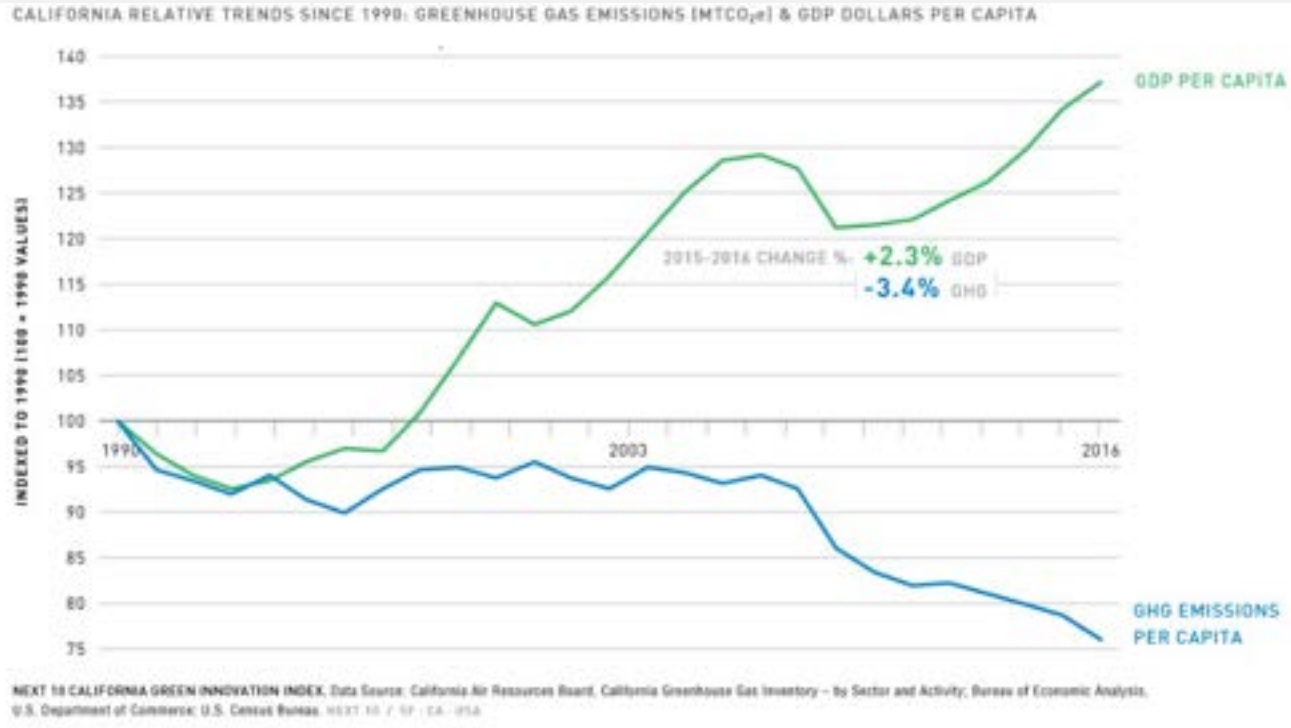
Technologies behind the curtain of the “clean energy future”:
critical mineral mining, high voltage transmission, EV & wind turbine manufacturing, carbon removal



GEOPOLITICAL REALITIES: CRITICAL MINERAL PRODUCTION

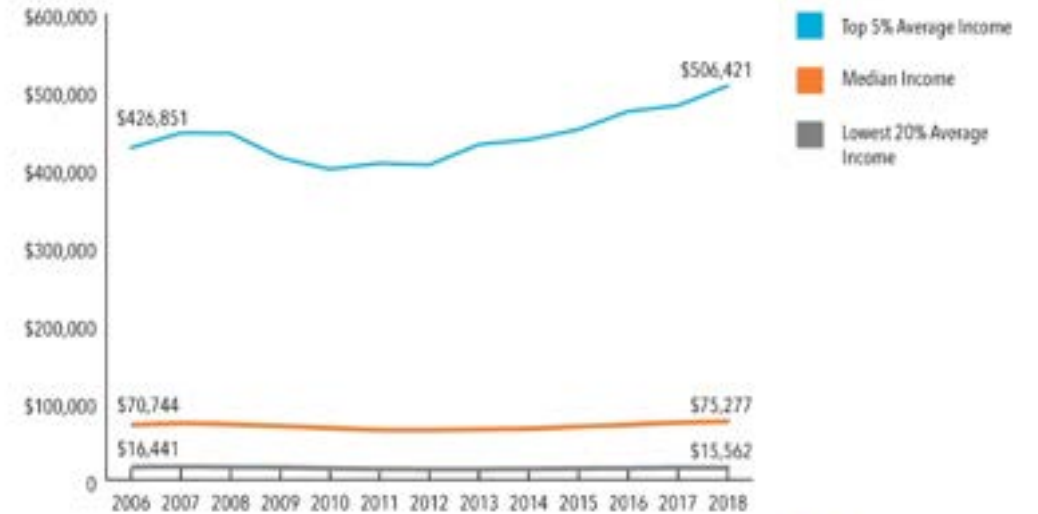


EQUITY REALITIES: LOWER EMISSIONS ≠ LOWER INEQUALITY



Income Inequality for California Households Has Significantly Grown in Recent Years

Inflation-Adjusted Household Income, 2006 to 2018

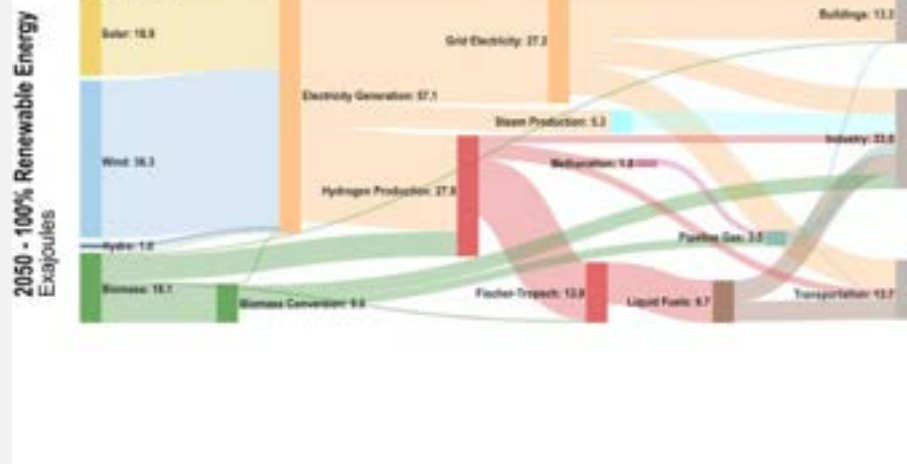
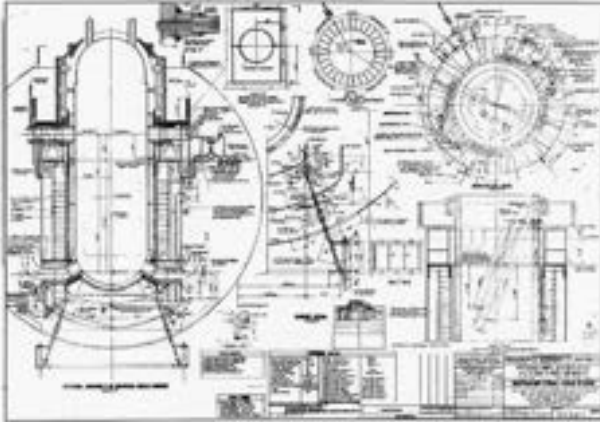


Source: Budget Center analysis of US Census Bureau, American Community Survey data

SHIFT IN THINKING ON ENERGY TRANSITION UNDER THE BIDEN-HARRIS ADMINISTRATION

From Place-Neutral Modeling & Technology...

...to Place-Based, People-Based Approach



WHAT IS “PLACE-BASED”?

Core elements for success:

- Include an **agreed-upon definition of “place”** for the purposes of the program or project (scope, geography, targeted population within a geography, etc)
- Recognize the **specific challenges and opportunities** of each place where investment is targeted (avoid “one size fits all” approaches)
- **Engage community members and stakeholders as active participants** in program development and implementation
- Take a **systems approach** that recognizes and addresses historic inequity and builds toward long-term change
- Continuously **learn and adapt** for better outcomes



Source: Urban Institute, 2018

PLACE-BASED EXECUTIVE ORDERS

Executive Order 13985: Advancing Racial Equity and Support for Under-served Communities Through the Federal Government



Executive Order 14008: Tackling the Climate Crisis at Home and Abroad

Creates the Justice40 Initiative & the Interagency Work Group on Coal & Power Plant Communities

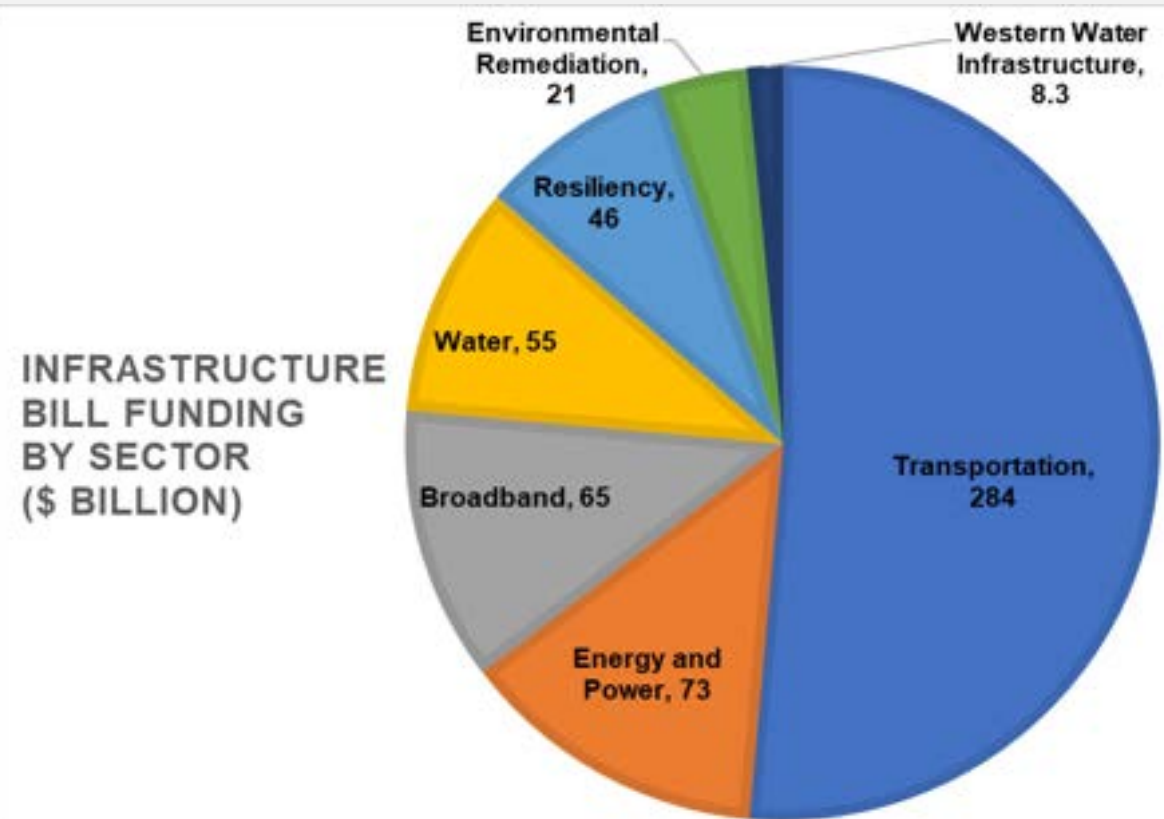
Executive Order 14017: America's Supply Chains

Executive Order 14025: Worker Organizing and Empowerment

Executive Order 14030: Climate-Related Financial Risk

BIPARTISAN INFRASTRUCTURE LAW

- \$1.2 Trillion for transportation and infrastructure spending
- \$550 Billion for new investments and programs
- \$62 Billion to Dept of Energy alone
- 5-10 year spending horizons
- Formula spending + competitive grants
- Clear focus on domestic investments, jobs, workers & communities



Clean Energy Funding

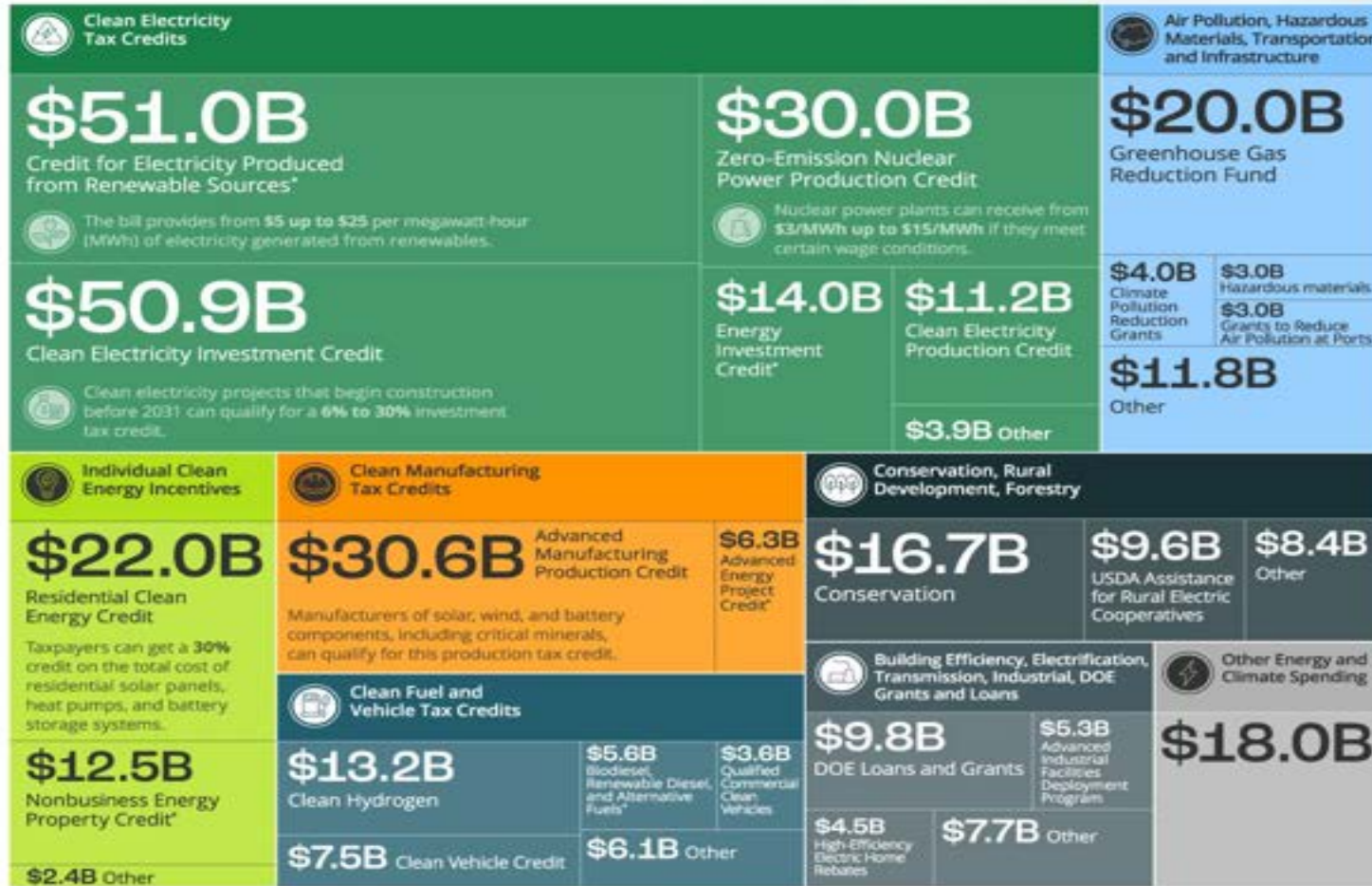
In the Inflation Reduction Act

The Inflation Reduction Act (IRA) is the largest climate legislation in U.S. history.

Here's a breakdown of all the clean energy and climate funding in the IRA.

Estimated Spending
(2022–2031) USD

Total Spending (2022–2031) **\$392.5B**



Source: Congressional Budget Office

*Indicates extensions or modifications of existing credits

INFLATION REDUCTION ACT (IRA)

Community Focused Incentives: *Tax Adders*

- Energy communities
- Low-income communities
- Projects using domestic products, apprenticeships & prevailing wage.
- Direct pay options for tribes & NGOs.

Targeted Loans

- \$250B in loan authority for energy infrastructure repurposing/reuse

Direct Grants for Environmental Justice



Learn more about how electric utilities and the power sector can lead on the path toward decarbonization.
DecarbonizationReport.com

Brought to you in partnership by
motivepower



DEPT OF ENERGY: ENSURING COMMUNITY AND WORKER BENEFITS THROUGH BIL & IRA IMPLEMENTATION



COMMUNITY BENEFITS PLAN IMPLEMENTATION

A **Community Benefits Plan (CBP)** is a **new requirement** added to all Funding Opportunity Announcements (FOAs) and Loan negotiations.

For competitive grants, the Community Benefits Plan is typically valued at **20 percent** of the overall score of the application.

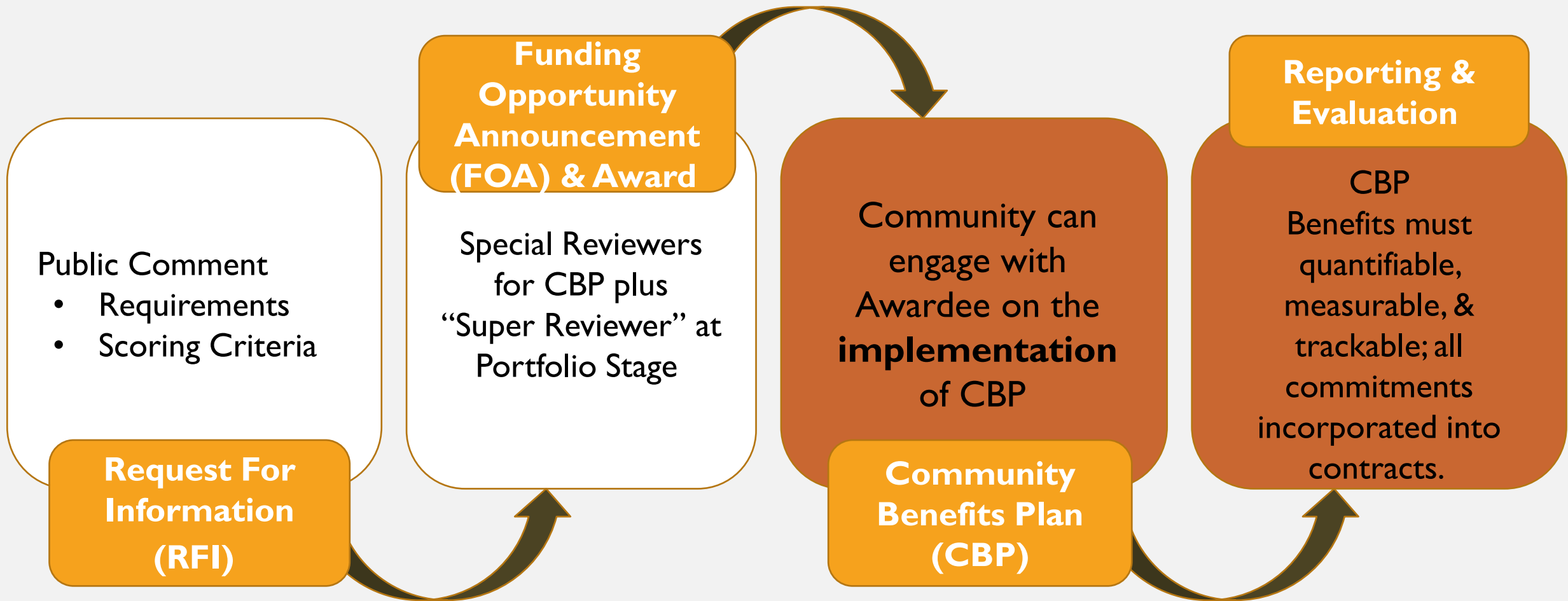
The CBP should outline:

- How the applicant intends to achieve DOE's priority areas of **Justice40, Diversity, Equity, Access & Inclusion (DEIA) & Quality Jobs**; and
- A **Specific, Measurable, Assignable, Realistic, & Time-Based (SMART)** milestone, **per budget period**, to measure progress on the proposed CBP actions.

If the project is selected:

- DOE will incorporate the **CBP** into the award and the recipient will be **required** to **implement** the **CBP** as proposed.
- During the life of the award, DOE will **evaluate** the recipient's progress, including as part of the "**Go/No-Go**" review process.

COMMUNITY ENGAGEMENT POINTS IN DOE PROJECT CYCLE





COMMUNITY BENEFITS PLANS = UMBRELLA TERM



SPECIFIC COMPANY COMMITMENTS, E.G.

- Wages, benefits
- Partnership with workforce training organizations
- Hiring community engagement specialists or teams
- Direct support to community groups
- Ongoing community advisory functions

NEGOTIATED, ENFORCEABLE AGREEMENTS WITH COMMUNITIES AND/OR WORKERS, E.G.

- Community Benefits Agreements
- Impact & Benefits Agreements
- Good Neighbor Agreements
- Project Labor Agreements

These are the **GOLD STANDARD** for CBPs.

COMMUNITY BENEFITS PLANS= PROJECT RISK REDUCTION

- Reduces risks of opposition and delays
- Maximizes benefits
- Ensures long-term success
- Builds durable support for implementation

“I’m confident that as the American people see and feel the benefits from our efforts to transform America’s economy, lower costs, create jobs, and strengthen our national security, we will build momentum and broaden support for further action.”



MORE RESOURCES

Community Benefits Plans (DOE):

<https://www.energy.gov/infrastructure/about-community-benefits-plans>

White House Climate and Economic Justice Screening Tool:

<https://www.whitehouse.gov/ceq/news-updates/2022/02/18/ceq-publishes-draft-climate-and-economic-justice-screening-tool-key-component-in-the-implementation-of-president-bidens-justice40-initiative/>

Support to Energy Communities:

<https://energycommunities.gov>

THANK YOU!



**Collaborative Infrastructure For
Building Resilient Communities & Landscapes**



Source Region:
Carbon, Water, Biodiversity

North Coast Resource Partnership Mission, Structure & Principles

- Convened in 2005
- Thriving Communities & Landscapes
- Leadership Council: Tribes & Counties
- Tech Committee: Tribes & Counties
- MOMU & Policy Handbook
- Equity, Transparency, Inclusion, Shared Vision, Common Ground
- Western & Tribal Science
- Planning : Implementation = 5 : 95
- Effective Use of Public Funds: ROI



Multiple Objectives/Multiple Benefits

- 
- An aerial photograph of a lush green forest with a narrow stream or path cutting through the center. The trees are dense and vibrant green, with some darker patches indicating shadows or different tree species. The stream is a dark, winding line that provides a focal point in the landscape.
- Forest health/fuel load reduction
 - Water quality and supply
 - Emissions reduction & energy independence
 - Climate adaptation
 - Local economic vitality
 - Community health & safety
 - Biodiversity & healthy ecosystems
 - Functional built infrastructure
 - Water
 - Wastewater
 - Energy
 - Communications
 - Conservation of working and natural lands



- Regional Collaborative Instructure & Capacity Enhancement
- Supporting Partners in Achieving Objectives
- Regional & Local Data, Assessments, Analyses
- Convening Towards Shared Vision & Shared Priorities
- Regional Prioritization of Projects & Activities
- Amplifying Need for/Benefits of Investment in North Coast Region
- Administering & Distributing Large Block Grants
- Regional Project Tracking & Performance Reporting
- Policy Influence
- Decision Making by Tribal and County Officials – nationally unique

Synchronizing Tribal, Federal, State, Regional, Local Priorities





OVERVIEW

PRIORITIZATION

STRATEGIES

DEMONSTRATION PROJECTS

PLAN IMPLEMENTATION

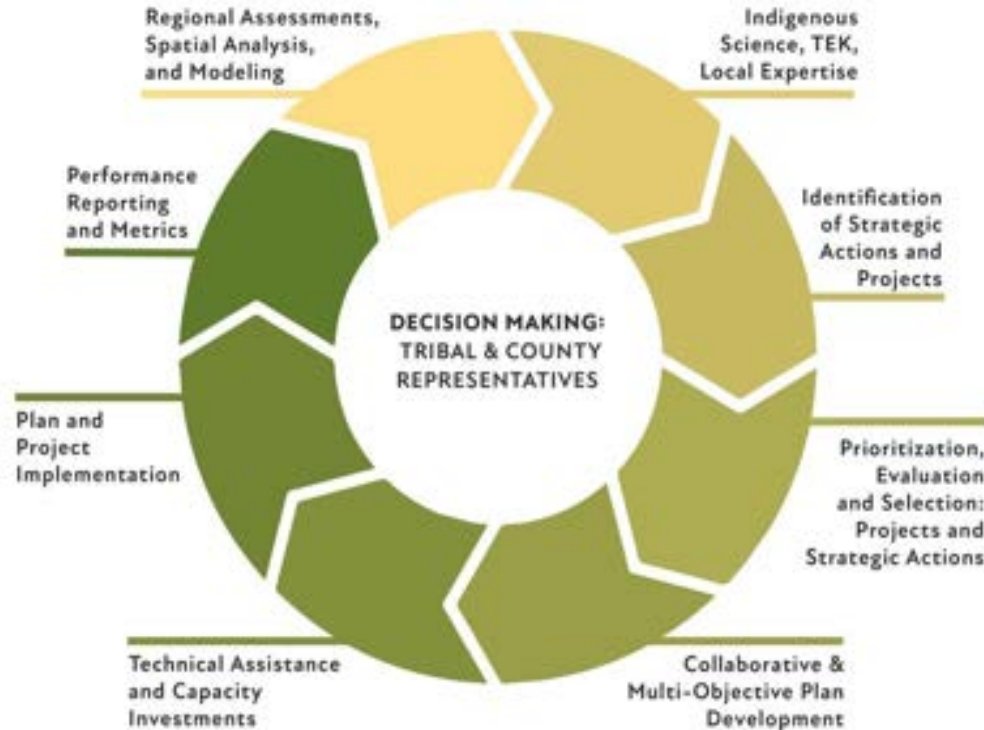


A VISION FOR

NORTH COAST RESILIENCE

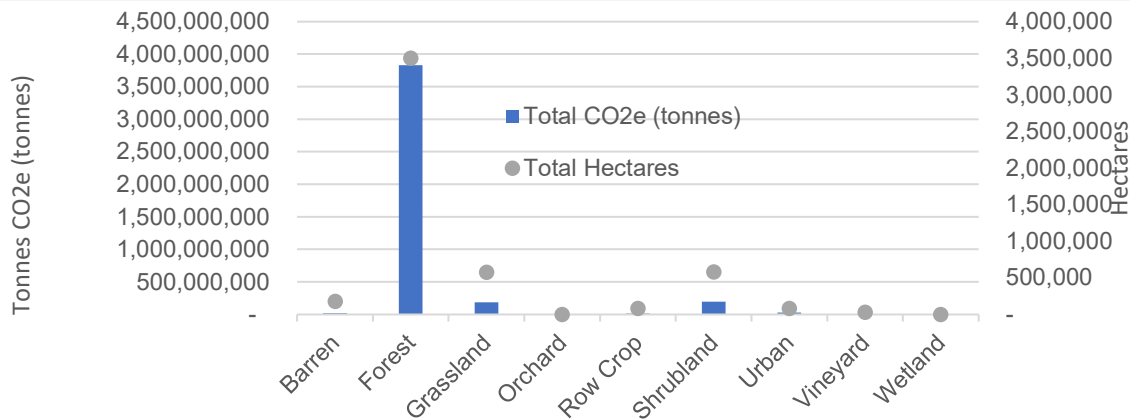
PRIORITIES FOR ENHANCING WATERSHED,
FIRESHED, FOREST, AND COMMUNITY RESILIENCE
IN THE NORTH COAST REGION

NCRP Adaptive Planning & Prioritization Framework



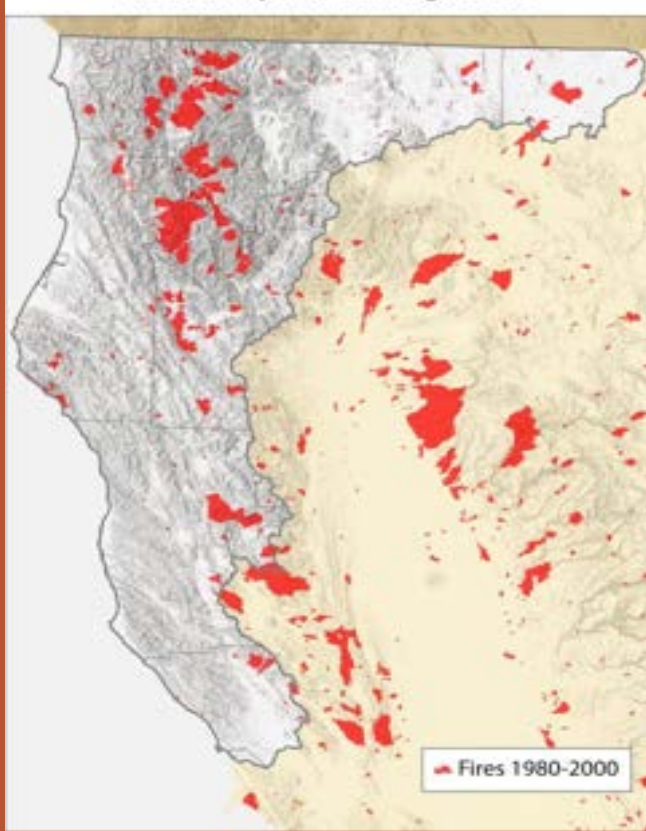
Carbon Stocks & Above Ground Biomass: Location & Quantity

NCRP Adaptive Planning & Prioritization Framework

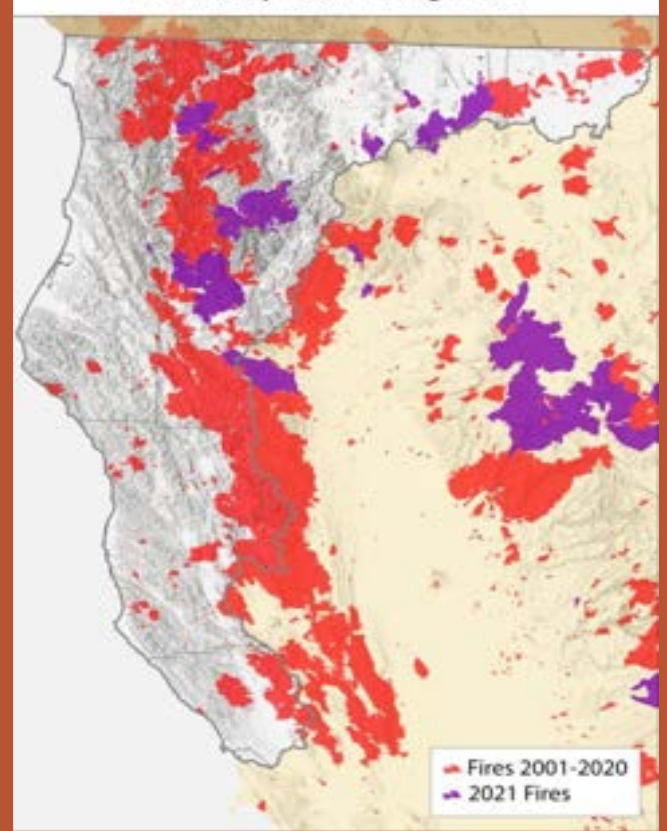


Total CO2e and Hectares by Landcover Class

Fire History 1980–2000



Fire History 2001-2021



Assessments: Communities At Risk

- Investigates North Coast communities' exposure and vulnerability to wildland fire
- Inputs:
 - Burn Probability
 - Housing Unit Density
 - Social Vulnerability Index

Top 25 North Coast Communities by Annual Housing Unit Exposure

Annual Housing Unit Exposure



Labels Only

North Coast Communities not in Top 25

Annual Housing Unit Exposure

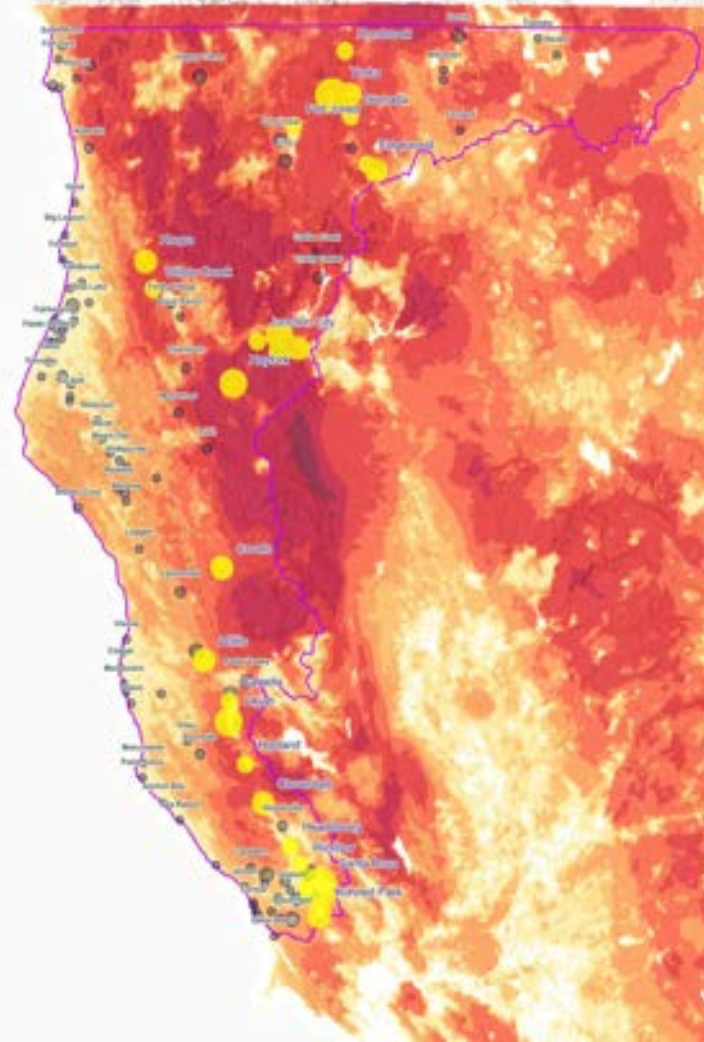


North Coast Resource Partnership Boundary



Annual Burn Probability

Annual Burn Probability



Regional Data & Local Knowledge



Diverse Regional Collaboration = Regional Resilience



Deriving Community Benefits from Climate Investments

Dr. Wilma Franco, Ed.D

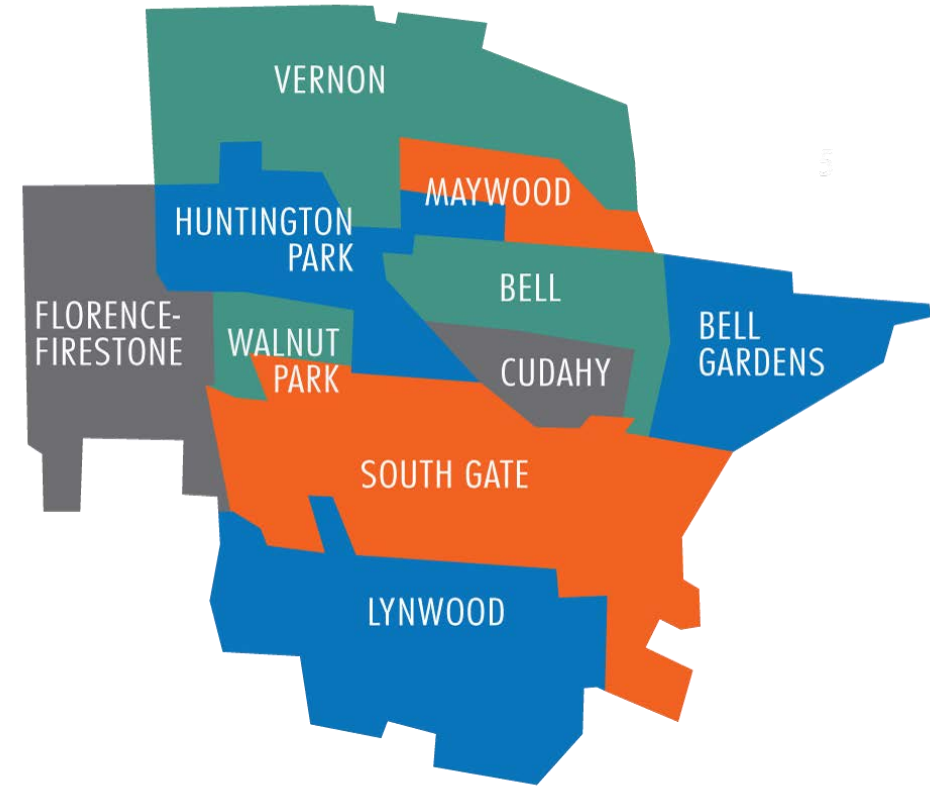
December 7th, 2023



ABOUT

Southeast Los Angeles (SELA) Collaborative

- ▶ Began in 2010 – relaunched in 2017
- ▶ Network of 12 organizations
- ▶ SELA Defined as: 8 cities and 2 unincorporated of LA County
- ▶ Fiscally Sponsored by Human Services Association (HSA)



Our North Star

Vision

SELA is a resource rich region with a strong nonprofit community and healthy, resilient, civically engaged residents that driver their own future.

Mission

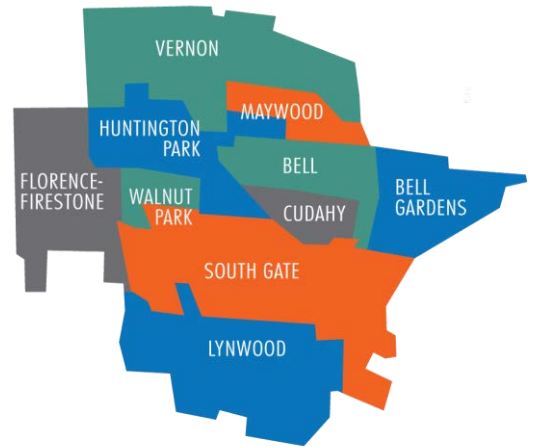
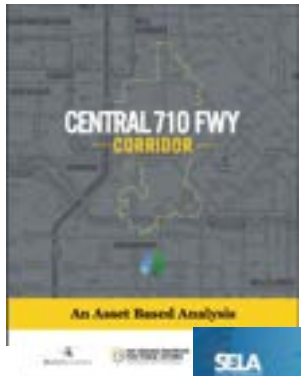
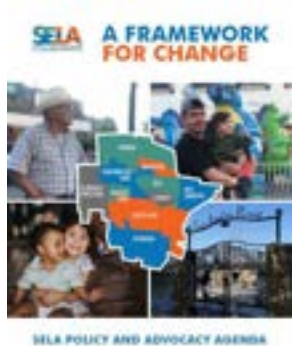
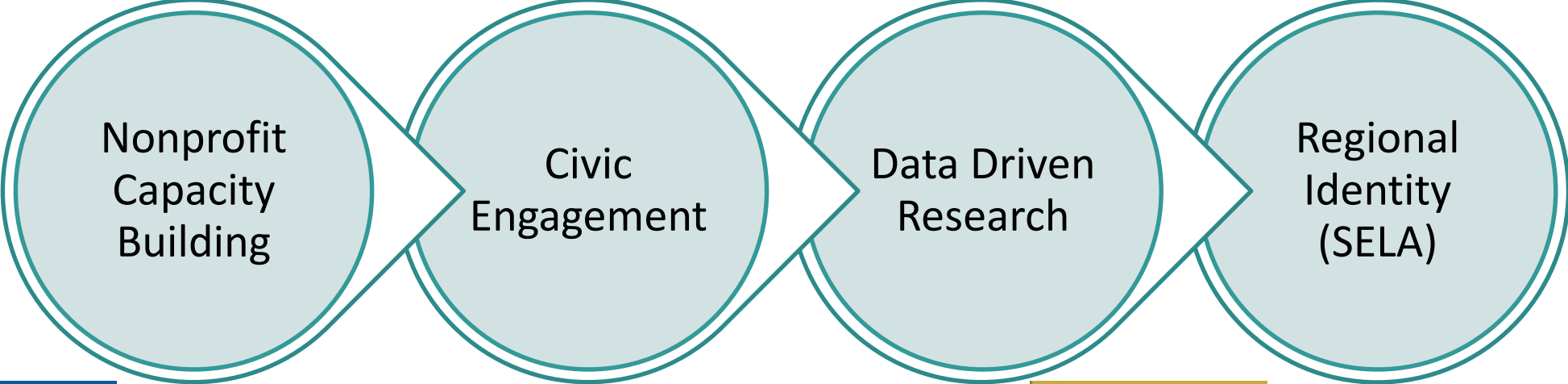
To strengthen the SELA community, build collective power, and encourage innovation to drive regional systemic change.



SELA Collaborative Members

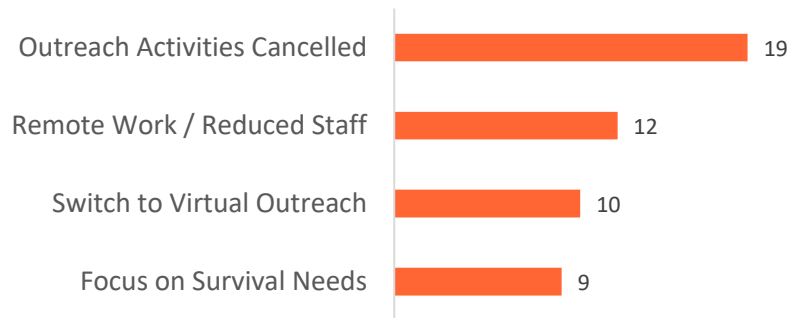


Our Priorities

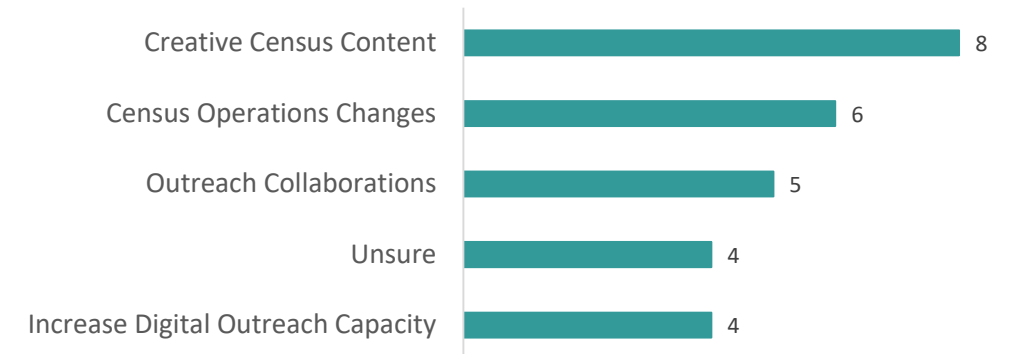


Anchor our efforts on partner feedback

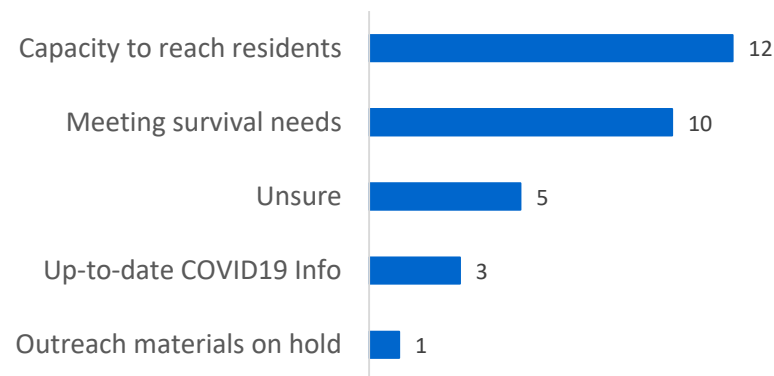
How has COVID19 impacted your Census outreach activities?



What would be helpful moving forward?



What are some concerns that you have?



Cultivate new partnerships

Option 1: Remote Outreach



WE COUNT LA
Southeast LA
CENSUS CAR CARAVAN!

Wednesday, June 17, 2020

WE COUNT
LOS ANGELES
Our Community. Our Census.

#WeCountLA
#2020Census

This will be a multi-city, multi-partner caravan. Please uphold COVID-19 physical and social distancing guidelines.

Option 2: On-the-ground Support



Metro's email blast to invite 11,000 staff members to volunteer in SELA

Advocating for equitable economic recovery and long term investment in SELA



THE CRISIS OF COVID-19 AND SOUTHEAST LOS ANGELES

A Survey Report

The Living and Working in SELA Survey: A Highlights Report
April 23, 2020
Dear Colleagues and Friends:
We hope you and your loved ones are safe in these perilous times. Our thoughts are with you all, as we struggle together in the coming weeks, months, and even years.
We are, as always, deeply concerned about the most vulnerable among us and the places and communities in which they live. In that spirit, our organizations and our partners have for some years been supporting the people of Southeast Los Angeles (SELA) to find their collective voice in the halls of power. SELA is a historically underserved region and home to one of the highest concentrations of Latinos and undocumented residents in the state of California. Effective and equitable solutions in this time of crisis must take into account the needs of communities such as SELA.
As part of that process, we have developed and implemented a pathbreaking survey, *Living and Working in SELA*. The survey was conducted just before the pandemic hit the United States. This is a portrait of SELA just before the sky fell in. With this initial survey as a baseline, a second survey focusing on the needs of SELA during and after the pandemic will be in the field shortly.
Because of the longstanding and persistent social, economic, and health inequities that have shaped daily life in SELA, the region will disproportionately



SUPPORTED BY A GRANT FROM:



Released June 2020

Released April 2020



Released March 3, 2021

Major Themes Informing the Agenda

Lean onto SELA leadership to deepen regional impact



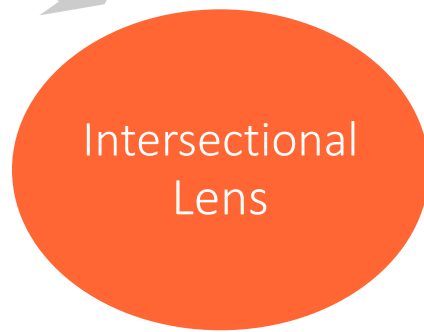
Secure the resources and support to exist and grow



Increase knowledge and participation in civic engagement and public institutions



Remedy historical factors causing social disparities and COVID19 exacerbations



Address core issue areas by implementing through an intersectional approach

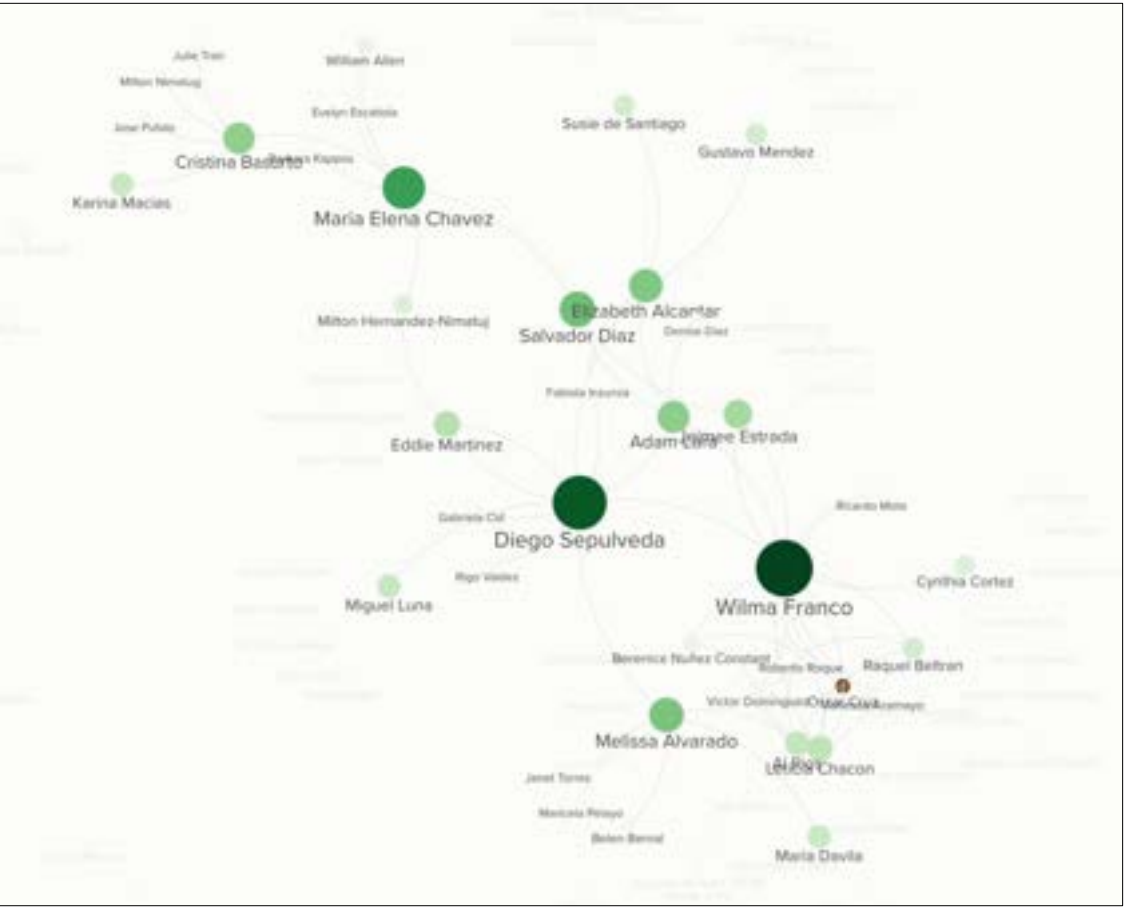
Covid-19 Vaccine Distribution in SELA

Context: *The SELA Collaborative was invited by Sup. Solis to join a call with Cal-EOS/FEMA, Hub Cities and South Gate City Manager. SELA Collaborative agreed to lead the Vaccine distribution for the South Gate Mobile Clinic for the region as the Lead CBO with Cal-EOS/FEMA. Brought on board on Friday, March 5th, 2021 for a Mobile Vaccine Clinic scheduled for March 6th – 10th.*

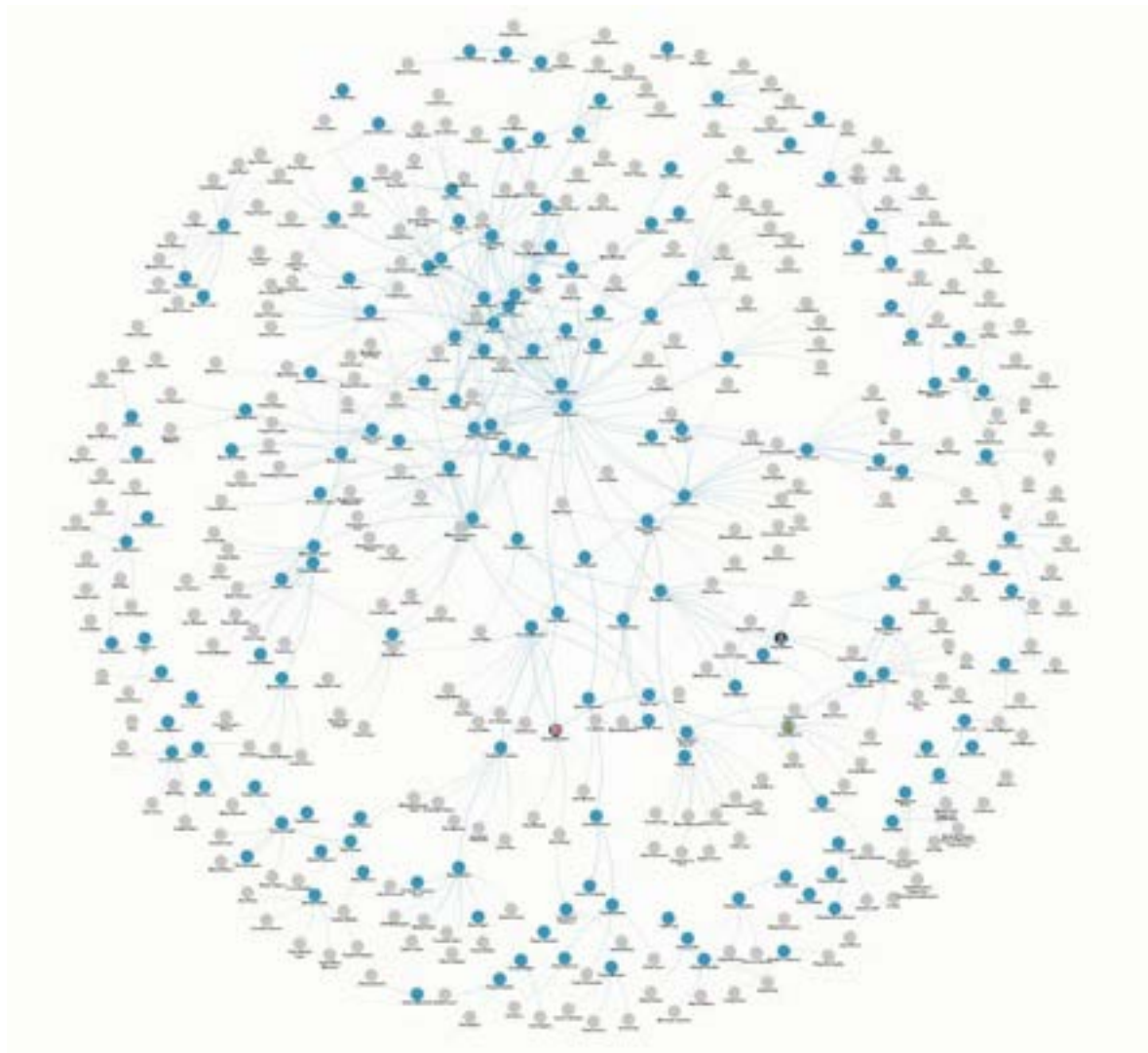
Strategy: *In partnership with Supervisor Hilda Solis, Assembly member Cristina Garcia, Assembly member Anthony Rendon, Senator Lena Gonzalez, and SELA local elect officials, nonprofits, and community leaders reaching out to community residents to ensure our SELA region receives their vaccines.*



SELA Leaders Network



Network Map May 2019



Network Map March 2022

Data-Driven Relational Strategy

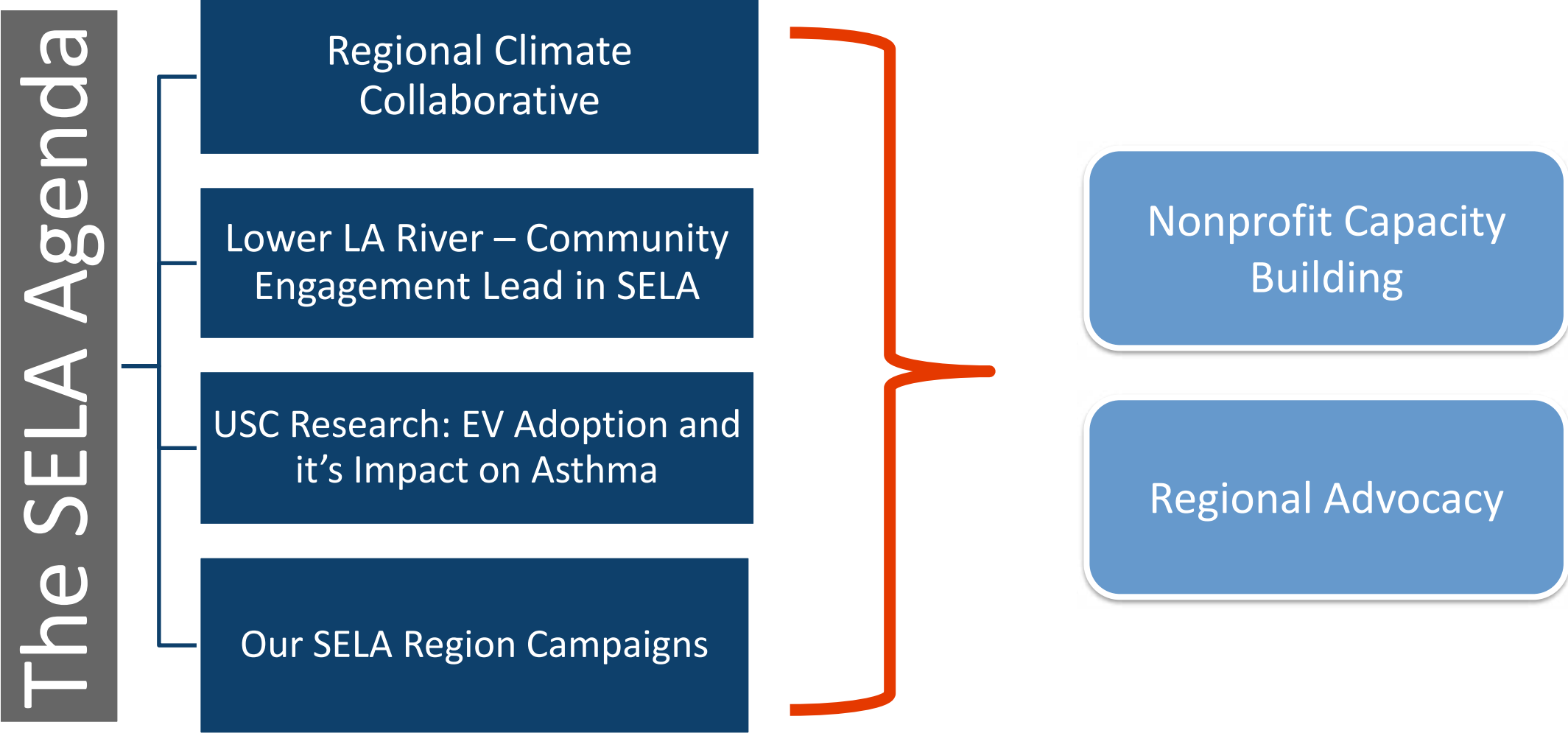
Nonprofit
Capacity Building

Regional Advocacy
Efforts

Regional
Marketing
Strategy

Community Driven
and Community
Informed

Other Ways We are Advancing *The SELA Agenda*



Get to Know SELA Collaborative

Case Study

North Star: In ten years, the SELA community will have the power of a cross-sector, collective voice that advocates for the region on a county, state and national level to bring resources and opportunities that improves the quality of life in SELA.

Strategic Priority 1: Building Nonprofit Capacity

The nonprofit sector is a critical driver of any social change agenda thus a concerted investment of time and resources dedicated to strengthening and expanding the SELA region's nonprofit sector is critical in creating a regional identity and collectively driving systemic change.

Strategic Priority 2: Civic Engagement

A strong infrastructure that engages, informs and organizes key regional stakeholders, polices, and decision-making is essential to long-term positive change throughout the region.

Data-Driven Research

SELA Collaborative seeks to understand before acting, centering community in all decisions; to effectively accomplish this, the Collaborative grounds all strategies, action and work in authentic, community informed data and research.



2020

Building Relationships to Create Change:

THE SELA COLLABORATIVE STORY





Thank you!