

## Conference Participants

Please contact [bcce.berkeley.law@gmail.com](mailto:bcce.berkeley.law@gmail.com) to report any mistakes in participant profiles or bio and insight statement documents.



### Denise Neves Abade

Mackenzie Law School, Mackenzie University, São Paulo,  
Brazil—Brazilian Federal Prosecutor Service

Professor Of Criminal Law; Federal Prosecutor; Ph.D. in  
Constitutional Law

[Click here to read Denise Neves Abade's bio and insight statement](#)



### Andres Antuna

UC Berkeley Law

Law Student

[Click here to read Andres Antuna's bio and insight statement](#)



# Shreya Atrey

University of Oxford

Associate Professor in International Human Rights Law

[Click here to read Shreya Atrey's bio and insight statement](#)



# Lizzie Barmes

Queen Mary University of London

Professor of Labour Law

[Click here to read Lizzie Barmes's bio and insight statement](#)



# Ingrid Bellander Todino

European Commission, DG Justice and Consumers

Head of Unit (acting), Gender Equality

[Click here to read Ingrid Bellander Todino's bio and insight statement](#)

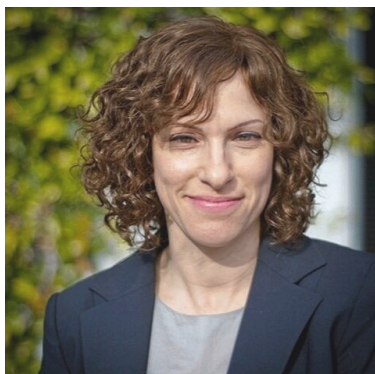


# Anne Bloom

Civil Justice Research Initiative, Berkeley Law

Executive Director, Civil Justice Research Initiative, Berkeley Law

[Click here to read Anne Bloom's bio and insight statement](#)



## Stephanie Bornstein

University of Florida Levin College of Law

Associate Professor

[Click here to read Stephanie Bornstein's bio and insight statement](#)



## Laura Bourgeois

In transition : Past CMS Francis Lefebvre Avocats Attorney at law - Future : Lawyer at non-profit Sherpa

Formerly Attorney-at-law at a major french law firm in Business law, just transitioned to the non-profit sector, joining the fight against economical violations of human rights at Sherpa

[Click here to read Laura Bourgeois's bio and insight statement](#)



## Emmanuelle Bribosia

Université Libre de Bruxelles

Professor of Law (Université Libre de Bruxelles)

[Click here to read Emmanuelle Bribosia's bio and insight statement](#)

## Emma Brown



McGill University

JD/BCL Student & Research Assistant at McGill University

## Lucy-Ann Buckley

NUI Galway

Senior Lecturer in Commercial Law, NUI Galway

[Click here to read Lucy-Ann Buckley's bio and insight statement](#)



## Madeline Buitelaar

The Law Offices of Amy Oppenheimer

Attorney, the Law Offices of Amy Oppenheimer

[Click here to read Madeline Buitelaar's bio and insight statement](#)



## Georgina Calvert-Lee

McAllister Olivarius

Head of UK Practice, McAllister Olivarius

[Click here to read Georgina Calvert-Lee's bio and insight statement](#)





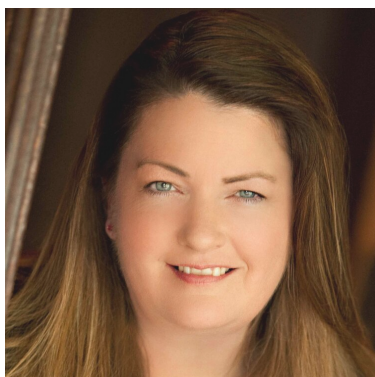


## Laura Carballo Piñeiro

World Maritime University

Professor, Nippon Foundation Chair, World Maritime University

[Click here to read Laura Carballo Piñeiro's bio and insight statement](#)



## Laura Carlson

University of Stockholm

Professor, University of Stockholm

[Click here to read Laura Carlson's bio and insight statement](#)



## Caitlin K. Cervenka

Willenson Law, LLC

Associate Attorney

[Click here to read Caitlin K. Cervenka's bio and insight statement](#)



## Sunu Chandy

National Women's Law Center

Legal Director - National Women's Law Center

[Click here to read Sunu Chandy's bio and insight statement](#)



## Jessica Clarke

Vanderbilt Law School

FedEx Research Professor of Law and Co-Director of the George Barrett Social Justice Program, Vanderbilt Law School

[Click here to read Jessica Clarke's bio and insight statement](#)



## Ally Coll

The Purple Campaign

President and Co-Founder

[Click here to read Ally Coll's bio and insight statement](#)



## Radhika Coomaraswamy

Former UN Special Rapporteur on Violence Against Women

Former United Nations Special Rapporteur on Violence Against Women

[Click here to read Radhika Coomaraswamy's bio and insight statement](#)

## Jessica Corsi



City University of London

Lecturer of Law, City University of London

[Click here to read Jessica Corsi's bio and insight statement](#)

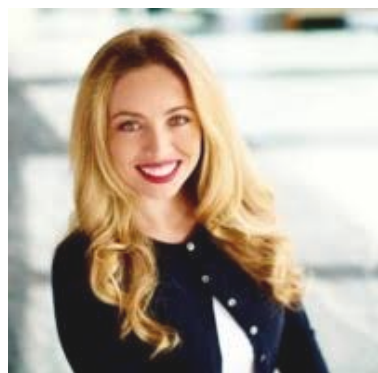


**Kim DaSilva**

Law Offices of Amy Oppenheimer

Workplace Investigator and Attorney

[Click here to read Kim DaSilva's bio and insight statement](#)



**Danielle Elizabeth DeBold**

Twitter

Global Employee Relations Partner

[Click here to read Danielle Elizabeth DeBold's bio and insight statement](#)



**Jiahui Duan**

Berkeley Law

Doctor of Juridical Science Candidate

[Click here to read Jiahui Duan's bio and insight statement](#)

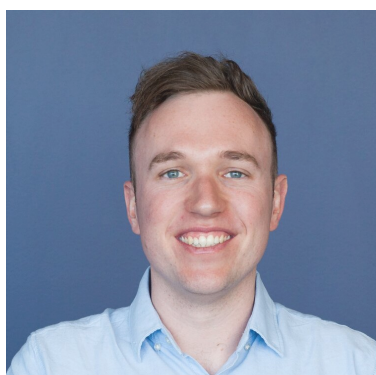
**Peter Dunne**



University of Bristol

Senior Lecturer

[Click here to read Peter Dunne's bio and insight statement](#)



## Liam Elphick

University of Western Australia

Adjunct Research Fellow, University of Western Australia  
Law School

[Click here to read Liam Elphick's bio and insight statement](#)



## Catherine Fisk

UC Berkeley Law

[Click here to read Catherine Fisk's bio and insight statement](#)



## Mahlet Fitsum

Ethiopian Women lawyers' Association

Lawyer, Human Rights, Democracy and Gender Expert

[Click here to read Mahlet Fitsum's bio and insight statement](#)

## Fernando Flores





Law Offices of Amy Oppenheimer

Attorney and Workplace Investigator – Law Offices of Amy Oppenheimer

[Click here to read Fernando Flores' bio and insight statement](#)



## Sandra Fredman

Oxford University

Rhodes Professor of Law

[Click here to read Sandra Fredman's bio and insight statement](#)



## Beth Gaze

Law School, University of Melbourne, Australia

Professor of Law

[Click here to read Beth Gaze's bio and insight statement](#)



## Eva Hoier Greene

McAllister Olivarius Law / ConsentLawyers

Social Media and Digital Officer

[Click here to read Eva Hoier Greene's bio and insight statement](#)

## Nicole Groves

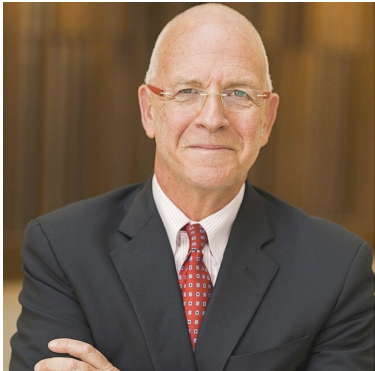
**NICOLE GROVES**



Facebook, Inc.

Associate General Counsel, Labor & Employment

[Click here to read Nicole Groves' bio and insight statement](#)



## Amos Guiora

SJ Quinney College of Law, University of Utah

Professor of Law, SJ Quinney College of Law, University of Utah

[Click here to read Amos Guiora's bio and insight statement](#)



## Maya Gunnarsson

McGill University

Research Assistant, McGill Faculty of Law



## Lindsay Harris

West Coast Workplace Investigations

Attorney at Law

[Click here to read Lindsay Harris' bio and insight statement](#)



## Barbara Havelkova

University of Oxford

Associate Professor

[Click here to read Barbara Havelkova's bio and insight statement](#)



## Thelton Henderson

U.C. Berkeley School of Law; Retired Federal District Court  
Judge

Visiting Distinguished Professor of Law

[Click here to read Thelton Henderson's bio and insight statement](#)



## Costanza Hermanin

John Cabot University

Visiting Professor of Political Science

[Click here to read Costanza Hermanin's bio and insight statement](#)



## Säde Hormio

Berkeley Law & University of Helsinki

Visiting Scholar, Berkeley Law

[Click here to read Säde Hormio's bio and insight statement](#)



## Kazuko Ito

Human Rights Now

Secretary General

[Click here to read Kazuko Ito's bio and insight statement](#)



## Christa Jakobsson

European Commission

Policy Officer, DG JUST, European Commission

[Click here to read Christa Jakobsson's bio and insight statement](#)

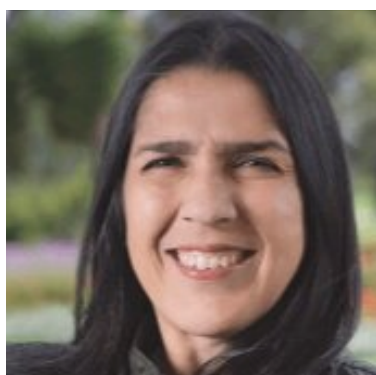


## Diana Louise James

Devon & Cornwall Police

Independent Strategic Adviser

[Click here to read Diana James' bio and insight statement](#)



## Isabel C. Jaramillo Sierra

Universidad de Los Andes

Full Professor of Law, Universidad de los Andes, Bogota

[Click here to read Isabel C. Jaramillo Sierra's bio and insight statement](#)





## Andrea Johnson

National Women's Law Center

Director of State Policy, Workplace Justice & Cross-Cutting  
Initiatives

[Click here to read Andrea Johnson's bio and insight  
statement](#)



## Kalpana Kannabiran

Council for Social Development

Professor & Director, Council for Social Development,  
Hyderabad

[Click here to read Kalpana Kannabiran's bio and insight  
statement](#)



## Puja Kapai

Faculty of Law, The University of Hong Kong

Associate Professor of Law and Convenor, Women's  
Studies Research Centre

[Click here to read Puja Kapai's bio and insight statement](#)



## Naina Kapur

NainaKapurLaw

Legal Specialist—Equality & Workplace Sexual Harassment  
(India)

[Click here to read Naina Kapur's bio and insight statement](#)



## Danielle Kim

UC Berkeley School of Law

Research Assistant, Berkeley Center on Comparative  
Equality and Anti-Discrimination Law

[Click here to read Danielle Kim's bio and insight statement](#)

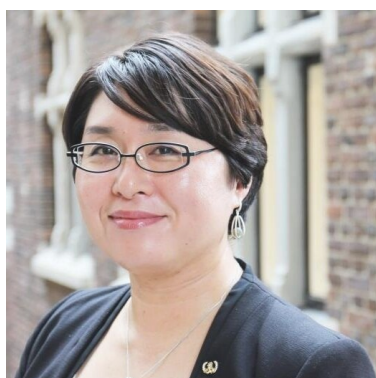


## Caroline Kioko

Heinrich Boll Foundation- Nairobi

Gender Democracy, Programme Coordinator - Heinrich  
Boll Foundation, East and Horn of Africa

[Click here to read Caroline Kioko's bio and insight  
statement](#)



## Momoko Kitada

World Maritime University

Associate Professor

[Click here to read Momoko Kitada's bio and insight  
statement](#)

## Leslie F. Levy

Levy Vinick Burrell Hvams LLP



Litigation Attorney

[Click here to read Leslie F. Levy's bio and insight statement](#)



## Ruby Lew

University of New South Wales

Research Assistant (University of Technology Sydney)

[Click here to read Ruby Lew's bio and insight statement](#)



## Tarek Maassarani

Independent restorative practitioner and Restorative DC

Independent restorative practitioner

[Click here to read Tarek Maassarani's bio and insight statement](#)



## Rakeen Mabud

TIME'S UP Foundation

Director, Research and Strategy

[Click here to read Rakeen Mabud's bio and insight statement](#)

## Severyna Magill



Sheffield Hallam University

Lecturer, Course Leader MA/LLM Applied Human Rights

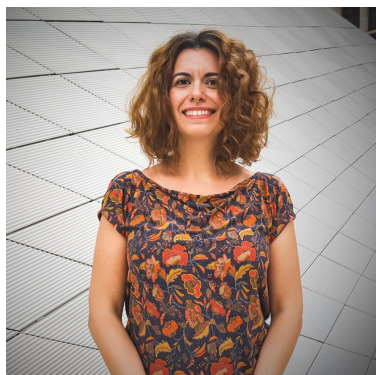
[Click here to read Severyna Magill's bio and insight statement](#)

## Mara Malagodi

CUHK LAW

Assistant Professor of Law

[Click here to read Mara Malagodi's bio and insight statement](#)



## Kate Malleson

Queen Mary University of London

Professor of Law

[Click here to read Kate Malleson's bio and insight statement](#)



## Rashida Manjoo

University of Cape Town

Professor, University of Cape Town

[Click here to read Rashida Manjoo's bio and insight statement](#)







## Virginia Marturet

UBA (University of Buenos Aires, Law school); independent consultant and researcher

UBA professor and lawyer; independent consultant and researcher

[Click here to read Virginia Marturet's bio and insight statement](#)



## Aileen McColgan QC

11 KBW London, University of Leeds

Barrister, 11 KBW; Professor of Law and Social Justice, University of Leeds

[Click here to read Aileen McColgan QC's bio and insight statement](#)



## Marie Mercat-Bruns

Sciences Po Law School

Affiliated Professor Sciences Po Law School (CNAM LISE CNRS)

[Click here to read Marie Mercat-Bruns' bio and insight statement](#)

## Ruth M. Mestre i Mestre



Prof. Jurisprudence and Feminist Legal Theory  
[Click here to read Ruth M. Mestre i Mestre's bio and insight statement](#)



## Katharina Miller

European Women Lawyers Association

President

[Click here to read Katharina Miller's bio and insight statement](#)



## Shivangi Misra

Canadian Feminist Alliance for International Action

Advocate (India/Canada)

[Click here to read Shivangi Misra's bio and insight statement](#)



## Jennifer Mondino

National Women's Law Center

Senior Counsel, TIME'S UP Legal Defense Fund

[Click here to read Jennifer Mondino's bio and insight statement](#)



## Marianna Muravyeva

University of Helsinki

Professor of Russian Law, University of Helsinki

[Click here to read Marianna Muravyeva's bio and insight statement](#)



## Ruth Nekura

Independent Consultant

Human Rights & Gender Equality Consultant

[Click here to read Ruth Nekura's bio and insight statement](#)

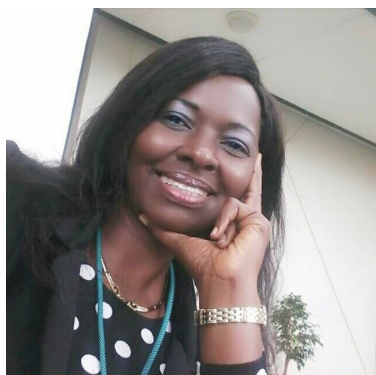


## Ann Noel

Co-Director, Sexual Harassment/Violence Working Group

Founder, Noel Workplace Consulting

[Click here to read Ann Noel's bio and insight statement](#)



## Joelle Nwabueze

Enugu State University of Science and Technology

Senior Lecturer of Law

[Click here to read Joelle Nwabueze's bio and insight statement](#)

## Karen O'Connell



University of Technology Sydney

Associate Professor, Faculty of Law, University of  
Technology Sydney

[Click here to read Karen O'Connell's bio and insight  
statement](#)



## Olubamidele Ogunleye

African Women in Media

Co-founder

[Click here to read](#)

[Olubamidele Ogunleye's bio and insight statement](#)



## Monica Arango Olaya

Oxford University

Dphil in Law student

[Click here to read Monica Arango Olaya's bio and insight  
statement](#)



## Alvaro Oliveira

European Commission

Legal Officer

[Click here to read Alvaro Oliveira's bio and insight  
statement](#)





## Amy Oppenheimer

Law Offices of Amy Oppenheimer

Managing Partner

[Click here to read Amy Oppenheimer's bio and insight statement](#)



## David Oppenheimer

University of California, Berkeley Law

Clinical Professor of Law

[Click here to read David Oppenheimer's bio and insight statement](#)



## Carla Pambianco

European Commission

Legal Officer

[Click here to read Carla Pambianco's bio and insight statement](#)



## Ana Daniela Pabon Ortiz

Member of Africa End Sexual Harassment Initiative (AESHI) and Association Justice and Human Rights Bolivia (Justicia y derechos humanos Bolivia)

Prof. Ana Daniela Pabón Ortiz. Member of AESHI and Justice and Human Rights Bolivia

[Click here to read Ana Daniela Pabon Ortiz's bio and insight statement](#)



## Pamela Price

Pamela Y. Price, Attorney at Law

Attorney

[Click here to read Pamela Price's bio and insight statement](#)



## Charlotte Proudman

University of Cambridge & Goldsmith Chambers

Junior Research Fellow, Queens' College, Cambridge &  
Barrister, Goldsmith Chambers

[Click here to read Charlotte Proudman's bio and insight statement](#)



## Maya Raghu

National Women's Law Center

Director of Workplace Equality and Senior Counsel

[Click here to read Maya Raghu's bio statement](#)

## Sara Church Reese

SCR Investigations Inc.



Workplace Investigator

[Click here to read Sara Church Reese's bio and insight statement](#)



## Jennifer Reisch

Equal Rights Advocates

Legal Director

[Click here to read Jennifer Reisch's bio and insight statement](#)



## Russell Robinson

UC Berkeley Law

Professor

[Click here to read Russell Robinson's bio and insight statement](#)



## Christina (Tina) Ro-Connolly

Law Offices of Amy Oppenheimer

Partner

[Click here to read Christina \(Tina\) Ro-Connolly's bio and insight statement](#)



# Maria del Rosario Grima Algora

UN Women

Policy Analyst, sexual harassment

[Click here to read Maria del Rosario Grima Algora's bio and insight statement](#)



# Isabelle Rorive

Université libre de Bruxelles

Professor

[Click here to read Isabelle Rorive's bio and insight statement](#)



# Robin Runge

The George Washington University Law School

Associate Professorial Lecturer in Law

[Click here to read Robin Runge's bio and insight statement](#)



# Celeste Saccomano

UN Women

Policy Analyst





# Rana Sahar

Berkeley Law

Student

[Click here to read Rana Sahar's bio and insight statement](#)



# Furaha Joy Sekai Saungweme

Africa End Sexual Harassment Initiative

Africa Regional coordinator for AESHI

[Click here to read Furaha Joy Sekai Saungweme's bio and insight statement](#)



# Zaneta Seidel

Law Offices of Amy Oppenheimer

Attorney Investigator

[Click here to read Zaneta Seidel's bio and insight statement](#)



# Ramya Sekaran

National Women's Law Center

Justice Catalyst Legal Fellow

[Click here to read Ramya Sekaran's bio and insight statement](#)



## Purna Sen

Executive Coordinator and Spokesperson on Addressing Sexual Harassment and other forms of Discrimination

UN Women

[Click here to read Purna Sen's bio and insight statement](#)



## Colleen Sheppard

Faculty of Law, McGill University

Professor, Faculty of Law & Centre for Human Rights and Legal Pluralism, McGill University

[Click here to read Colleen Sheppard's bio and insight statement](#)



## Patricia A. Shiu

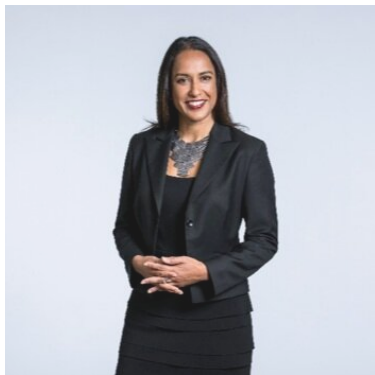
Berkeley Center on Comparative Equality and Anti-Discrimination Law

Consultant and former Obama Political Appointee at the Department of Labor

[Click here to read Patricia A Shiu's bio and insight statement](#)

## Natasha de Silva

Australian Human Rights Commission



Senior Executive, Australian Human Rights Commission

[Click here to read Natasha de Silva's bio and insight statement](#)



## Belinda Smith

Sydney Law School, University of Sydney

Associate Professor

[Click here to read Belinda Smith's bio and insight statement](#)



## Ann Spivack

The Law Offices of Amy Oppenheimer

Writer/Editor

[Click here to read Ann Spivack's bio and insight statement](#)



## Deeba Syed

Rights of Women

Senior Legal Officer, Rights of Women

[Click here to read Deeba Syed's bio and insight statement](#)

## Sharyn Tejani



National Women's Law Center/TIME'S UP Legal Defense Fund

Director, TIME'S UP Legal Defense Fund

[Click here to read Sharyn Tejani's bio and insight statement](#)



## Vida Thomas

Law Offices of Amy Oppenheimer

Partner

[Click here to read Vida Thomas's bio and insight statement](#)



## Martina Törnkvist

European Commission

Legal officer European Commission DG Justice

[Click here to read Martina Törnkvist's bio and insight statement](#)



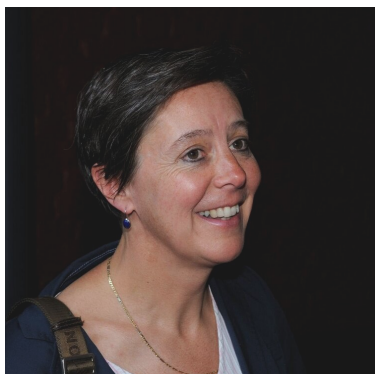
## Laura Tracey

St Mary's University

Senior Lecturer

[Click here to read Laura Tracey's bio and insight statement](#)





## Karen Vandekerckhove

European Commission

European Commission, Head of Unit

[Click here to read Karen Vandekerckhove's bio and insight statement](#)

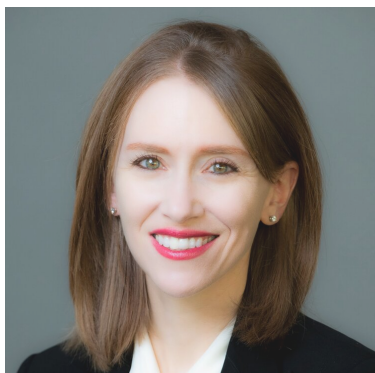


## Estefanía Vela

Intersecta

Executive Director

[Click here to read Estefanía Vela's bio and insight statement](#)



## Rachel Vogelstein

Council on Foreign Relations

Douglas Dillon Senior Fellow & Director, Women and Foreign Policy Program

[Click here to read Rachel Vogelstein's bio and insight statement](#)



## Halliki Voolma

European Commission

Policy Officer, gender equality unit, Directorate-General for Justice, European Commission

[Click here to read Halliki Voolma's bio and insight statement](#)

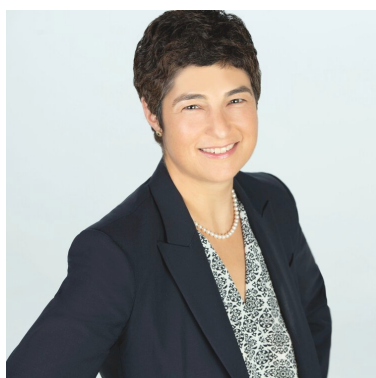


## Leslie Wexler

University of Illinois College of Law

Professor of Law, University of Illinois College of Law

[Click here to read Leslie Wexler's bio and insight statement](#)



## Marni Willenson

Willenson Law, LLC

Attorney and Owner at Willenson Law, LLC

[Click here to read Marni Willenson's bio and insight statement](#)



## Jamillah Bowman Williams

Georgetown Law Center

Associate Professor, Georgetown Law

[Click here to read Jamillah Bowman Williams's bio and insight statement](#)



## Keina Yoshida

Centre for Women, Peace and Security, LSE

Research Officer, LSE; barrister, Doughty Street Chambers

[Click here to read Keina Yoshida's bio and insight statement](#)

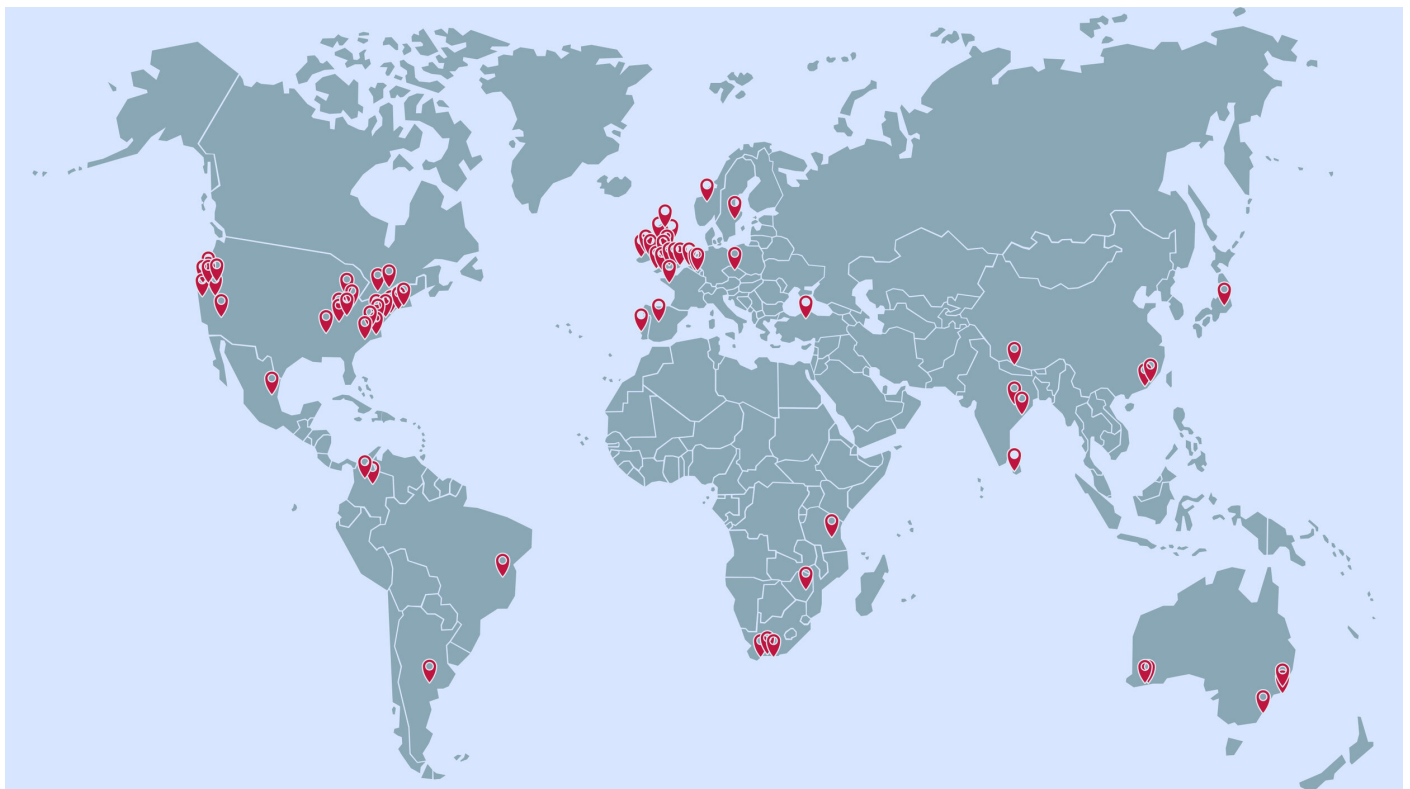


## Lining Zhang

JOE Law Education Institute

Law teacher and educator

[Click here to read Lining Zhang's bio and insight statement](#)



This map shows the location of our panelists and workshop moderators. Our virtual conference is set in London, but we are spread across six continents.

# Our Participants

[Home](#) [About](#) [Contact](#)