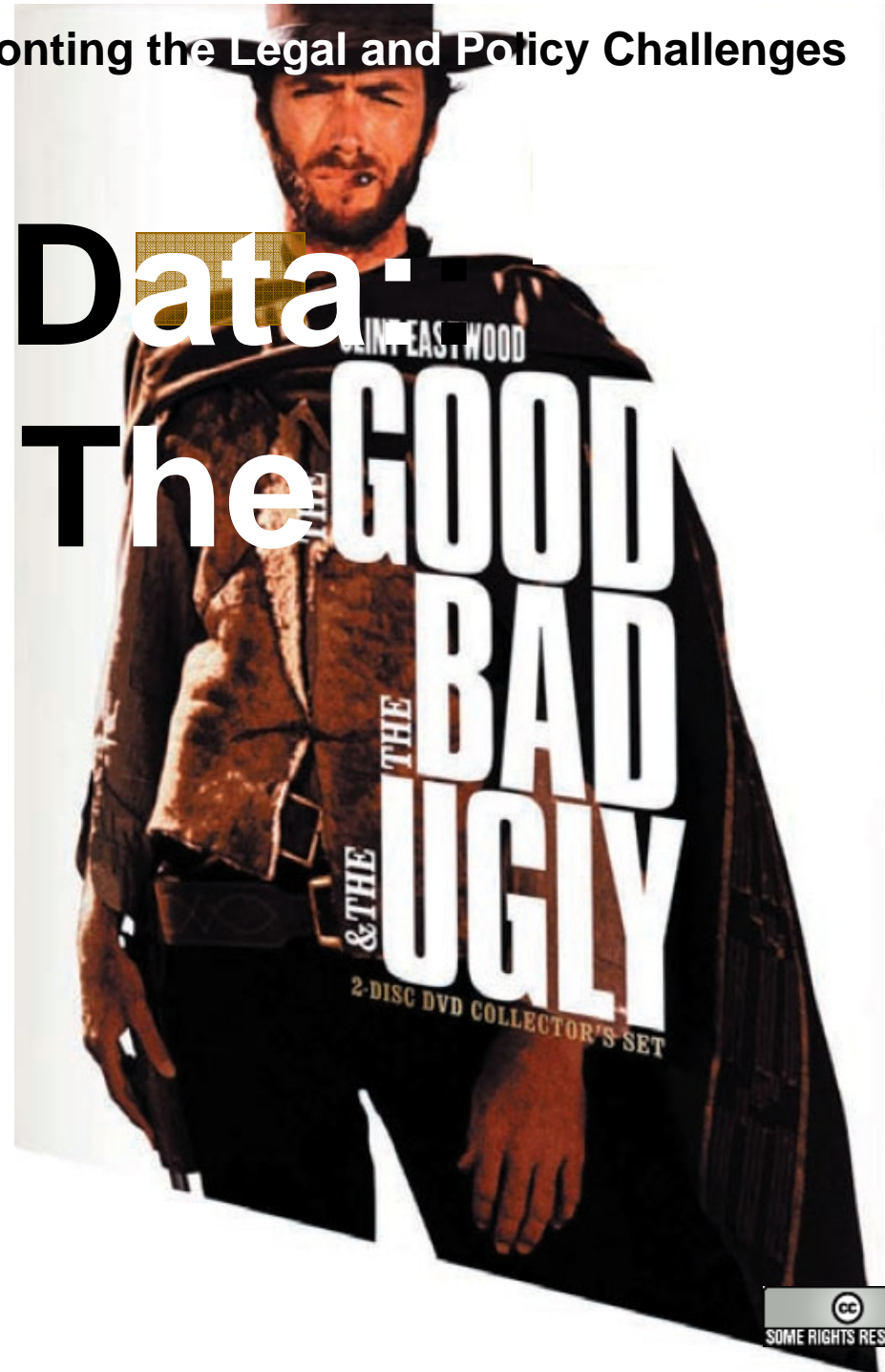


California's Stem Cell Initiative: Confronting the Legal and Policy Challenges
Berkeley, CA. March 2-5 2006

Stem Cell Data: The GOOD & THE BAD UGLY

Stephen M. Maurer
Goldman School of Public Policy
UC Berkeley
smaurer@berkeley.edu



The Bad



Why Replicate NIH?

Typical Scientific Database Problems

- Reluctance to Disclose Data

- Not Enough Curation and Editing

- Computational Sophistication

- User-Friendliness

Can California Do Better?

The Good



Possible Models:

- Bermuda Protocols

- The (Non-Existent) Proteomics Protocols

- Big Science Databases

- Commercial Partnerships

Making the Choice -

- Do Old Experiments Matter?

 - Avoiding old (and costly) failures

 - Little overlap, poor replicability.

 - An evidentiary question.

...and
The Ugly



Could California Replicate Microsoft?
(Assuming it wanted to...)

Tipping Markets
How Powerful Are Data?

Who Will Own the Winning Cell Line(s)
For Research
For Therapy

California's Stem Cell Initiative: Confronting the Legal and Policy Challenges
Berkeley, CA. March 2-5 2006

Stem Cell Data: The GOOD & THE BAD UGLY

Stephen M. Maurer
Goldman School of Public Policy
UC Berkeley
smaurer@berkeley.edu

