

Language Acquisition and Immigrant Integration in the 111th Congress



Presenter:

Raul Gonzalez

The National Council of La Raza

2009 Warren Institute Convening

May 4, 2009

Language Acquisition and Immigrant Integration in the 111th Congress

- Political Landscape
- Policy Landscape
- Key Issues
- Legislative Outlook

Political Landscape

Immigration Reform and English Only

- 1986 IRCA
 - “Tanton Memo” on Hispanics and immigration
 - 1988 Arizona English Only ballot initiative
- 1996 IIRAIRA
 - “Bill Emerson English Language Empowerment Act of 1996”
- 2005-2006 CIR bill
 - “Inhofe Amendment”
- 2009 Alexander and Inhofe Amendments

Policy Landscape

ARRA has commanded everyone's attention.

- Funding is intended to save teacher jobs – *and drive policy.*
- ARRA has the potential to shape ELL policy and practice.
- What about adult ELLs?
- After ARRA, there is still lots to be done and Congress is eager to define its role.
- ARRA can shape politics on immigration and integration.

Policy Landscape

Comprehensive Immigration Reform in the 111th Congress

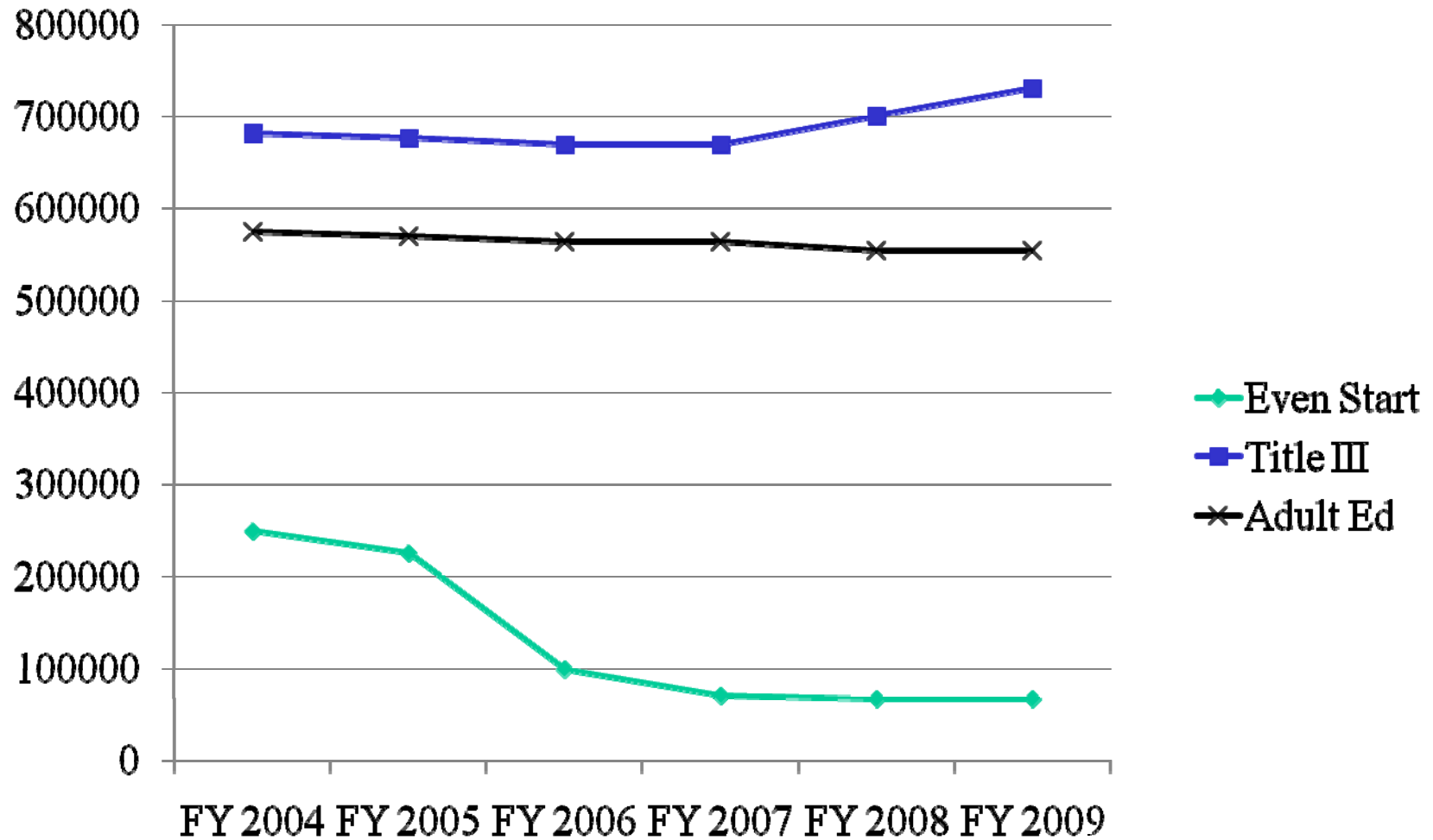
- Working groups of Members, advocates, and the White House
- Goal of 218 and 60 votes
- Elements include legalization (including DREAM Act), backlog reduction, family reunification, AgJOBS, enforcement, and citizenship/integration
- Action in fall

Language Acquisition and Integration

Policy Issues in the 111th Congress

- Funding for English acquisition programs
 - Decrease in Even Start
 - Flat funding for Adult education
 - Recent increase for Title III
 - Overall decrease from FY 2004-2008 of \$183.5 million
 - Total investment of \$1.4 billion
- Immigrant Integration legislation
 - Freestanding legislation
 - Part of Comprehensive Immigration Reform

Federal Investment in English Acquisition (in thousands)



NCLR - May 4, 2009

Immigrant Integration Legislation

Genesis and purposes of integration legislation

- Anticipate English only legislation
- Shape politics of immigration
- Provide support for English acquisition
- Need for integration policy

Immigrant Integration Legislation

Increased Investment in English Acquisition
under the Adult Education and Family
Literacy Act

- Creates authorization for English Literacy and Civics Education
- Report on needs for ELLs and sharing of best practices with regards to integrated English literacy and civics education programs

Immigrant Integration Legislation

Expansion and evaluation of Even Start

- Increases the appropriation authorization of Even Start to \$500M
- Requires the Director of the National Institute for Literacy to design a plan to research the components of successful family literacy services and review, design, and conduct an evaluation of the Even Start program

Immigrant Integration Legislation

Expanded Learning Time for Middle and Secondary School ELLs

- Authorizes grants to state educational agencies to provide competitive subgrants to local educational agencies for high quality expanded learning time programs for English language acquisition for middle and secondary school students
- Authorizes \$50,000,000 for fiscal year 2010

Immigrant Integration Legislation

Employer Tax Credit

- Equal to 20% or no more than \$1,000 per full-time employee participating in a language acquisition or GED training program
- Qualified expenses are those paid or incurred by an employer to make available educational services for English language acquisition and GED training

Immigrant Integration Legislation

Office of Citizenship and Immigrant Integration

- Establish national goals for immigrant integration and assess federal policies
- Liaison with state and local governments that establish integration councils and help states coordinate integration services
- Research current and future demand for federal English acquisition programs and services

Legislative Outlook

- Immigration discussions ongoing, with “action” taking place in the fall
- DREAM Act moving together with CIR or as a separate bill
- Integration bill introduction in June
- English acquisition sections of the Integration bill as part of Workforce Investment Act reauthorization
- “Integration” policies as part of CIR

Keep In Touch

Raul Gonzalez, Legislative Director

rgonzalez@nclr.org

NCLR: 202-785-1670