


Slide 1

Introduction to Atlas.ti
October 17, 2008

<p>Yuki Kato Tulane University ykato.tulane.edu</p>	<p>Danielle S. Rudes George Mason University drudes@gmu.edu</p>
---	---

1

Slide 2



The Atlas state-of-mind

- Best designed for grounded theory
- Most flexible of all qualitative software programs and thus the most challenging to learn
- Not an analysis program; it's a concept database

2

Slide 3

Quick Review of Grounded Theory

- Inductive data analysis process
- Systematic coding of data
 - Codes constructed from ground up
 - Codes modified/combined throughout process
 - Many types of data

(Glaser and Strauss)

3

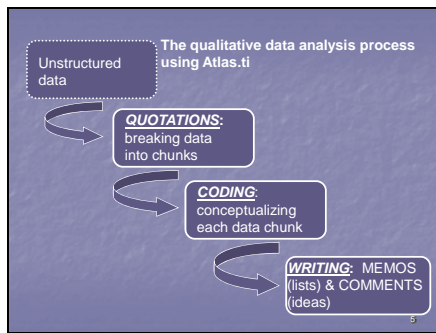
Slide 4

How Atlas.ti works

- Built on low-level tools
 - We are used to having one button do everything for us, but in Atlas.ti we have to work through what we want step by step.
 - There are multiple ways of doing one thing.
 - It is able to do everything at once—no sequencing is required.
- Designed for "grounded theory" procedures
 - Allows for the analysis to unfold and change as you go
 - Annotate everything—write as you go

4

Slide 5



Slide 6

Some orientating terms

- **HU:** Hermeneutic unit = your project file. Each HU contains four main objects.
 1. **PD:** Primary document = your documents
 2. **Quotation:** a unit of data; meaningful unit; segments of data you select
 3. **Codes:** names of concepts that you provide/create
 4. **Memos:** a way to annotate your project that exists as an object itself

6

Slide 7

Atlas.ti and Data

- Atlas does *not* download the data, it only accesses the data in another location
- What gets saved in Atlas.ti are...
 - Codes/Links/Memo you create under an HU
 - *Where* in the original documents each is linked

7

Slide 8

The PD and the HU

- The HU is a small file that saves links to all your PDs and the information about the analysis you've done.
- Once you've created an HU you'll want to link Primary Documents to it.
- **Important note:** You cannot change your original document once you've begun coding it.

8

Slide 9

HU and Teamwork

- HU is a single user file
- You can make multiple copies of the HU, name them separately and merge later.
- PDs have to be in same order in each HU copy for successful merge to occur.

9

Slide 10

Sample Quotations

Quotation 1
Quotation 2

RG asks him [the parolee Joe] if he is dirty. Joe hangs his head to his chest and replies yes in almost a whisper/mumble. RG says "Joe, Joe, Joe...what are we going to do with you?"

Joe looks down the street and again mumbles "I know, I know". RG tells him that they've been down this road many times before and he says "at the risk of sounding like a broken record, you gotta stop using Joe".

Joe nods his head yes, still looking down the street, away from RG.

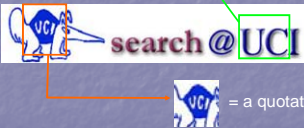
Quotation 3
10

Slide 11

Quotation as a unit

UCI

= a quotation



UCI

= a quotation

11

Slide 12

Coding quotations

CODES

Drug use

Parole violation

Home visit

Parolee-agent rapport

RG asks him [the parolee Joe] if he is dirty. Joe hangs his head to his chest and replies yes in almost a whisper/mumble. RG says "Joe, Joe, Joe...what are we going to do with you?"

Joe looks down the street and again mumbles "I know, I know". RG tells him that they've been down this road many times before and he says "at the risk of sounding like a broken record, you gotta stop using Joe".

Joe nods his head yes, still looking down the street, away from RG.

12

Slide 13

Memo

Memo
I've noticed that there are times when parole agents have a seemingly parental relationship with one or more parolees on their caseload. I'd like to look into literature on roles and rapport in case work. Additionally, I'd like to look back at some of those pieces I read for Emerson's People Processing class at UCLA to see if there are existing typologies that include parental roles that I could use as a jumping off point (particularly in policing/law enforcement work).

Quotation
RG asks him [the parolee Joe] if he is dirty. Joe hangs his head to his chest and replies yes in almost a whisper/mumble. RG says "Joe, Joe, Joe... what are we going to do with you?" Joe looks down the street and again mumbles "I know, I know". RG tells him that they've been down this road many times before and he says "at the risk of sounding like a broken record, you gotta stop using Joe". Joe nods his head yes, still looking down the street, away from RG.

Linked

13

Slide 14

Memo/Comments


Quotation or Code
Adaptive place

Comment
This code applies to both temporarily and permanently appropriated social space for activities that diverge from the intended use of the space but does not disturb others.

14
14

Slide 15

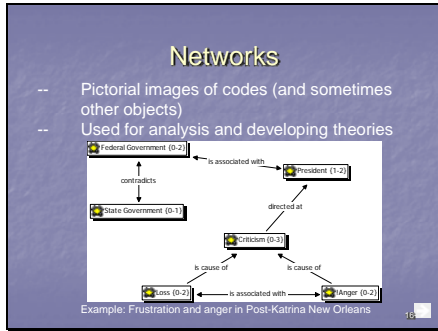
Atlas.ti in a nutshell...



- You will primarily use Atlas.ti to:
 - break your primary documents down into quotations;
 - code the quotations;
 - link the codes in networks;
 - navigate around your work using the query tool.
 - and take notes as you go using memos and comments.

15

Slide 16



Slide 17

Query/Supercodes

Query: search tool

Example 1
[irritation] AND [strong] AND [self-defiance]

Example 2
[adaptive place] AND [loiter] NOT [adult supervision]

Supercode: saved query (for repeated uses)

17

Slide 18

Families (a code filtering tool)

- Codes
 - Blatant disregard
 - Subtle disregard
 - "Look other way"
 - Monkey wrench
 - Incite anger in others
 - Gossip
 - Cheat the system
 - Lie
 - Reduce effort

Family =
Workplace Resistance

18

Slide 19

Hyperlinks

- Linking of quotations to simplify the analysis
- Connecting distant quotations
- Uniting several quotations to count as one
- Linking quotations across PD

A

B

C

D

D = Hyperlink

Slide 20

Outputs

5 Key Outputs (that are analytic...100s more possible)

- Outputs can be displayed in Atlas, saved to a file or sent to a printer.
 1. Quotations for a selected code
 2. Codes-PD Table
 3. Networks
 4. Print text with margin
 5. SPSS

20

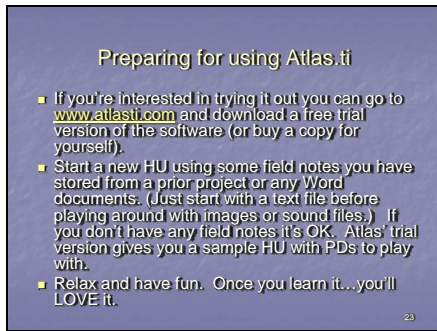
Slide 21

Here's what your EXCEL Coding Frequency Table (output) might look like. It shows counts by code by PD.

Slide 22



Slide 23



Slide 24