

# Making Accountability Count

## Removing barriers to enforcing Kenya's sexual-violence law

**K**im Thuy Seelinger isn't one to back down from a challenge—a good thing, given her current objective at Boalt Hall's Human Rights Center (HRC).

As director of the HRC Sexual Violence & Accountability Project, Seelinger is spearheading the center's push to help address violence against women more effectively—especially sexual violence related to conflict or political unrest. That effort has begun in Kenya, where HRC convened a three-day workshop in May to strengthen investigations, prosecutions, medical services, and psychological support—and to help those sectors interact more efficiently in implementing

Kenya's 2006 Sexual Offenses Act.

“Currently, it's a very long and difficult route for a victim to obtain justice,” Seelinger says. “We designed our workshop to bring together all the authorities in charge of responding to sexual violence. Because Kenya has a robust civil society infrastructure, it's a good baseline for us in learning how to work effectively in other, less-developed countries.”

### Post-election fallout

In June 2010, HRC Executive Director Camille Crittenden and a graduate researcher visited Kenya to gauge fallout from the country's post-election violence in late 2007 and early 2008. Seelinger—a former staff attorney and clinical teaching fellow at UC Hastings College of the Law's Center for Gender and Refugee Studies—has made four subsequent trips.

“Kenya's Sexual Offenses Act is on the books but hasn't been implemented at all,” she says. Forensic evidence is vital in prosecutions under the Act, and recent regulations mandate taking two forensic samples from any survivor who comes in for post-rape services and examination—one for clinical care and one for police. “That's just not happening,” Seelinger laments, “even in Nairobi's main government hospital, let alone in more remote provinces.”

For victims of sexual violence in Kenya, obstacles exist at every turn. Many health care providers aren't trained to administer a rape-kit exam, and the results of exams that are administered often don't reach police on time. When results do reach police, officers are rarely trained to properly handle specimens, interview, or investigate. And when a DNA specimen does actually get to a government chemist? Sometimes poor handling has destroyed the evidence or a government chemist lacks the resources to analyze it properly.

### Violence accountability

Directed study groups—staffed with students from Boalt and UC Berkeley's School of Public Health—have provided valuable research throughout HRC's preliminary site visits, May workshop, and subsequent analysis. HRC students also prepared a series of in-depth background papers on aspects of accountability for sexual violence, and their papers were reviewed by international experts and presented at the May workshop.

“They've given us terrific insight into Kenya's jurisprudence, investigation and prosecution, witness protection, access to psychosocial support, and community approaches,” Crittenden says.

After contributing to Kenya's capacity-building dialogue about sexual-violence accountability, HRC will next examine the response to sexual vio-

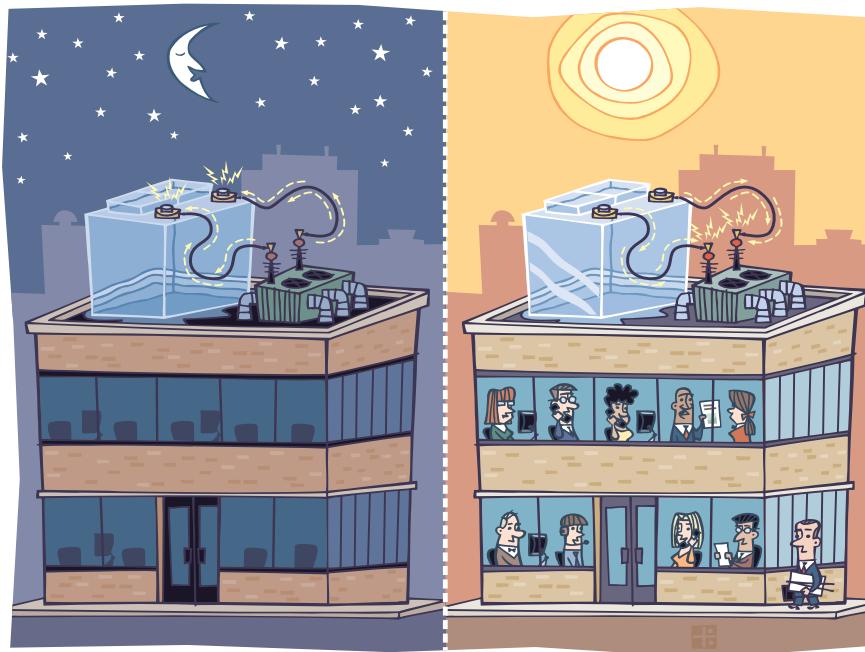
lence in Nepal, with another two to four countries to follow. After that, it will conduct a comparative analysis to see which accountability and protection strategies may be transferable to other coun-

tries and which may be unique to a given nation. “A lot of this comes down to political will,” Seelinger says, “and building the right relationships.” —*Andrew Cohen*



# Energy Storage Gets Cooler

**Boalt helps smooth the way to California's renewable power future**



It's noon on an August scorcher, and L.A.'s temperature is already nearing 100. Air conditioners labor; demand for electricity soars, outstripping the grid's baseload generating capacity. Now “peakers”—auxiliary power plants used solely to meet peak loads—fire up to meet the demand. Most burn fossil fuels, and they're less efficient than baseload plants, so they spew greenhouse gases and other pollutants into the air.

But a growing number of SoCal buildings are keeping their cool in the heat—without running air-conditioner compressors at peak times. These energy-savvy buildings are equipped with Ice Bear Energy Storage Systems. Yoked to commercial-sized air conditioners, Ice Bears use cleaner, cheaper off-peak power to turn 450 gallons of water per unit into ice overnight; then, as the afternoon heats up, the ice helps the buildings chill out. Ice Bears are the creation of Ice Energy, a Colorado-based firm headed by Boalt alum Frank Ramirez '79. Ice Energy has contracted with the Southern California Public Power Authority to install more than 7,000 Ice Bears on commercial buildings by 2013.

Making ice with off-peak power is just one method of storing energy and lowering peak loads, says Ethan Elkind of Boalt's Center for Law, Energy & the Environment (CLEE). Other

methods include chemical storage batteries; fast-spinning flywheels; caverns filled with pressurized air, which can spin generators when it's released; and pumped-hydro storage installations, which pump water uphill by night, then funnel it through turbines by day. Although the methods differ, the goal is the same: Flatten demand peaks by storing cleaner, cheaper off-peak power, whether that off-peak power comes from hydroelectric dams, clean coal, nuclear reactors, or—ideally, and increasingly—renewable sources, chiefly solar and wind.

## Breaking barriers

If it all sounds slightly piecemeal and patchwork, that's because it is, for now. But Elkind and CLEE are working to dismantle barriers to energy storage, in order to move from patchwork to “combine and conquer.”

Elkind is a policy research fellow at both Boalt and the UCLA School of Law, with a focus on the intersections of law, energy, and climate change. Over the past two years at CLEE, with funding from Bank of America, he has organized seminars and published white papers on topics that combine those disciplines. Among them: creating walkable, climate-friendly neighborhoods; reducing greenhouse-gas emissions from farming; siting solar farms atop big buildings;